



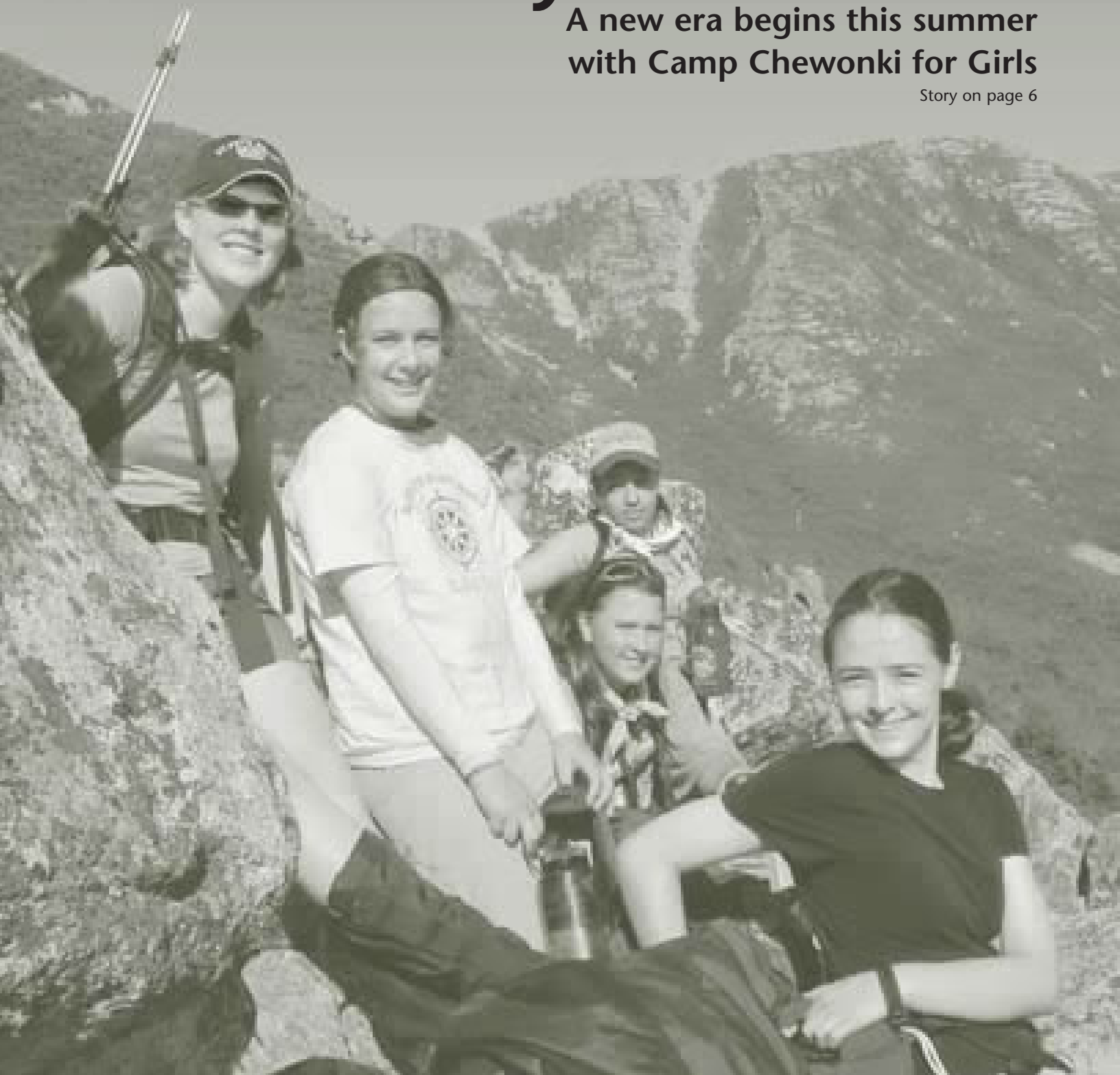
SPRING 2008

THE CHEWONKI FOUNDATION CHRONICLE

Sky Is the Limit

A new era begins this summer
with Camp Chewonki for Girls

Story on page 6



CHEWONKI FOUNDATION STAFF

Don Hudson, President
Garth Altenburg, Camp Chewonki for Boys, Director
Betta Stothart Connor, Director of Community Relations
Lucy Hull, Director of Development
Don Lamson, Facilities Manager
Dot Lamson, Center for Environmental Education, Director
Willard Morgan, Maine Coast Semester, Head of School
Greg Shute, Wilderness Programs, Director
Dick Thomas, Director of Alumni Relations
Edward Tittmann, Chief Financial Officer
Genell Vashro, Camp Chewonki for Girls, Director

Mark Adams, Big Eddy Campground Staff
Susan Adams, Big Eddy Campground Manager
Hannah Alpert-Abrams, Outdoor Classroom
Scott Andrews, MCS, History
Carob Arnold, Waterfront Manager
Peter Arnold, Sustainability Coordinator
Paul Arthur, MCS, English, E.L., Assistant Head of School
Amanda Barker, Outdoor Classroom
Alana Beard, Wilderness Programs, Assistant Director
Joel Berenbaum, Outdoor Classroom
Sarah Burgess, Kitchen and Dining Manager
Chrissy Burnham, Girls Camp, Assistant
Emma Carlson, Outdoor Classroom
Lauralyn Citizen, Reception/Office Manager
Cory Cramer, MCS Teaching Fellow
Keith Crowley, Outdoor Classroom/Outreach Educator
Erin Cummings, Accounting/Human Resources
Eric Duffy, Health Care Assistant
Bill Edgerton, Cook
Phine Ewing, Volunteer Gardener
Joanna Fernald, Health Care Coordinator
Lynne Flaccus, Head Naturalist
Rhan Flatin, MCS, Science
Kate Fox, Camp Assistant
Jaimie Frailey, Girls Camp, Assistant Director
Ginny Freeman, Camp Registrar
Joel Friedlander, Outreach Intern/Educator
Meg Giuliano, MCS Teaching Fellow
Erika Gould, Annual Fund Manager
Rebecca Graham, Database Manager
Leah Kramer Heyman, Outdoor Classroom
Bill Hinkley, MCS, Math
Abby Holland, MCS, Spanish
Abby Huckel, Farm Apprentice
Anna Hunt, Outreach Director
Libby Irwin, MCS Admissions and Alumni Officer
Carol James, Housekeeping
Brad Johnson, Farm and Woodlot Manager
Rebecca Kosakowski, MCS, Admissions Director
Aaron LaFlamme, Outdoor Equipment and Logistics
Matt Langella, Maintenance
Albert Lawrence, Maintenance
Ryan Linehan, Whitewater Programs
Prema Long, Outreach Educator
Kelly Martin, Assistant Outreach Director
Sarah Mazur, Outdoor Classroom
Trish McLeod, Business Office
Jock Montgomery, Photography
Eric Nelson, Outdoor Classroom
Ted Oxholm, MCS Teaching Fellow
Liz Padgett, Outdoor Classroom, Assistant Program Director
Scott Peterson, Outdoor Classroom
Megan Phillips, Outdoor Classroom
Hannah Plekon, Outdoor Classroom
Ben Redman, MCS, Math
Chris Riley, Outdoor Equipment and Logistics Manager
Liz Roberts, Outdoor Classroom
Amy Rogers, MCS, English
Krystal Rogers, Outdoor Classroom
Ben Rubins, Outdoor Classroom
Doug Soholt, Outdoor Classroom/Outreach Educator
Ruthie Szatkowski, Outreach Intern/Educator
Jeremy Tardiff, Assistant Farm Manager
Ed Thompson, Librarian
Karen Thorp, Outdoor Classroom
Leah Titcomb, Outdoor Classroom
Katie Tremblay, Outdoor Classroom, Program Director
Tom Twist, Pathways Assistant
Sue West, MCS, Art
Marjolaine Whittlesey, MCS, French
Ken Wise, Carpenter
Margaret Youngs, Assistant Farm Manager

CHRONICLE STAFF

Elizabeth Pierson, Editor
Betta Stothart Connor, Assistant Editor
Fall Design, Design

PROGRAMS

Maine Coast Semester
Camp Chewonki
Wilderness Trips for All Ages
Outdoor Classroom for Schools
Traveling Natural History Programs
Pathways to a Sustainable Future

Cover photo by Leah Titcomb

Contents

3 President's Notes

4 News from the Neck

6 The Countdown Begins!

The red-letter day has been long awaited. On June 24, on Fourth Debsconeag Lake in the heart of Maine's North Woods, Camp Chewonki for Girls will open its doors.

10 From Sheep to Shawl

Six hours ago, Bessie's wool was on her back. Now it's lying on the barn floor, where five MCS students are learning how to "skirt" it—whatever that means. By the end of the semester, another student may well be knitting this same wool into a hat.

14 Changing Lives

Matt Lunt knows firsthand how Chewonki's Outdoor Classroom can change lives. Interviewing for a teaching position at a large public school last year, he had one question: "Is there room in the budget to take my kids to Chewonki? If they had said no, it would have been a pretty big deal-breaker."

18 The Greening of the Green

With a flood of natural light, energy-saving light fixtures, efficient appliances and refrigeration, super insulation, and first-of-their-kind solar panels that produce both hot water and electricity, the renovated Wallace Center will be greener than ever.

20 A Fond Farewell

Farm and Woodlot Manager Brad Johnson and his family are moving west—to Vermont, that is.

22 Family Camp Goes North

Join us for three days this August on Fourth Debsconeag Lake in the North Woods—our newest property!

24 On My Bookshelf

Blood and Thunder: The Epic Story of Kit Carson and the Conquest of the American West by Hampton Sides

24 Step It Up for Sustainability

It couldn't be simpler: turning off your computer will reduce your carbon emissions *and* your electric bill!

25 People

28 Annual Report 2006–2007



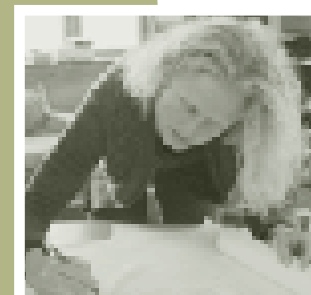
Page 6



Page 10



Page 14



Page 18



Page 20



On Woodpeckers and Wilderness

An extended family of Pileated Woodpeckers has been hammering away at the trees in our woods for over twenty years. It never ceases to amaze me how quickly they can render an ant-infested tree into a pile of sawdust. The 40-foot trunk of a white birch—all that is left of this elegant sentry at the bottom of the hill—is perforated by fist-sized holes. There is not much more wood for the carpenter ants to mine—no more room left to expand their galleries—and what remains of this trunk now appears to be serving as nothing more than a feeding station for the woodpeckers. Late this winter a fresh hole and nesting cavity showed up in a white pine in another corner of the woods. The work is the same for the Pileated Woodpecker year in and year out. The neighborhood hasn't changed either, though the specific details of day-to-day living have varied greatly for these birds over the past two decades.

The life and times of Chewonki are much the same too. Young people have been coming to camp for nearly a century, and they have been packing a bedroll or stuffing their sleeping bag for a trip into the woods for just as long. Some of the equipment is the same or nearly so—pots and pans—and some is radically different—sleeping bags and packs. Out into the woods, down the rivers, and along the coast we go, in search of adventure and a better understanding of the wide world around us.

The emphasis on wilderness travel and exploration has been so important an activity at Chewonki for all of this time that it became a central and organizing objective for the advisory committee charged with expanding girls programs. When we learned of the opportunity at Fourth Debsconeag Lake in the heart of Maine's 100-Mile Wilderness, suddenly the process moved from the theoretical to the very real possibility of opening the doors of Camp Chewonki for Girls in a spectacular wilderness setting. So, we're pitching camp and making a home in a new corner of Maine. It will be a red-letter date in our history, yet the activities will be as familiar and comfortable as an old wool sweater!

Our "Sheep to Shawl" program, featured in this issue, is another example of the sort of teaching and learning that have been as consistent at Chewonki as the ringing of the bell at mealtime. The same sorts of fundamental lessons about using and managing natural resources are captured in new building projects like "The Ritz" on the Lower Field. Water conservation has been a mantra here for decades. The spaces may be new, and they may even shift position on the landscape, but the goal of reducing the footprint of our human activity on the land and water of Chewonki Neck has never changed.

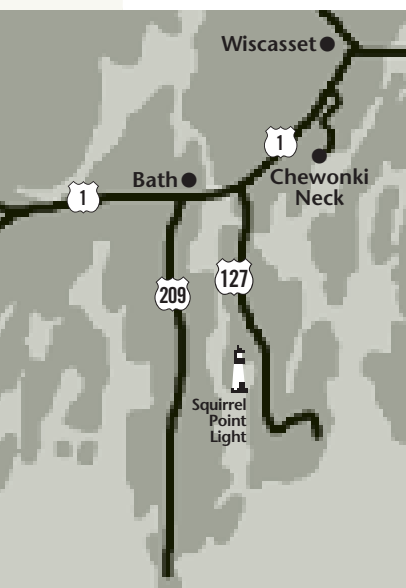
Maine's first "green" dining facility is becoming greener still with lots of exciting changes and improvements. Nevertheless, it is anchored by the unchanged facade of the Barn.

There is much in the course of our lives here at Chewonki that is changing—new buildings, new programs, and even a new camp. The mission and philosophy that shape our educational experiences are sound. The important lessons about life, communities, and the natural world that we learn along the trail and in the classroom in 2008 are much the same as those learned in 1915. The more things change, the more they stay the same, as the old saw goes!

DON HUDSON



Photo by Jeremy D'Entremont, www.lighthouse.cc



To the Lighthouse

"The first thing we'll do is establish a campsite," said Chewonki president Don Hudson after signing the license for Squirrel Point Light. Squirrel Point is less than a day's paddle from Chewonki's waterfront and will be a tremendous asset for trippers, particularly given the declining trend in public access to Maine islands. The campsite will ultimately be part of the 325-mile-long Maine Island Trail.

Automated in 1979, the light remains an active navigation aid. The buildings are not open to the public, but the grounds are, from a trail at the end of Bald Head Road in Arrowsic. "The site is gorgeous and well worth the 10-minute walk through the woods to get there," says Don.

Chewonki will work closely with the local group Citizens for Squirrel Point to determine what work will be necessary to maintain the buildings. For now, ownership of the property remains with the Coast Guard. If Chewonki eventually decides it has enough information and support to petition for ownership, it will do so. "In the meantime," says Don, "we will try to be good caretakers and stewards of the place."

Chewonki Board Adopts Ambitious Carbon Reduction Measures

At its winter meeting in Boston, Chewonki's 27-member Board of Trustees unanimously adopted an ambitious goal: to reduce Chewonki's base-line 2005–2006 levels of carbon emissions 10 percent by 2010; 20 percent by 2015; and 80 percent by 2050.

"Chewonki's campus already provides an excellent example of how long-term thinking and investments in insulation, water conservation, and alternative lighting and heating methods can pay off," said board president Josh Marvil. "The latest move by our board is a formal statement of our continued commitment to carbon emission reductions in the face of imminent climate change. The targets also provide a tool to guide decision

making as it pertains to operations and our 400-acre campus."

The effort to adopt formal standards has been the focus of Chewonki's sustainability coordinator, Peter Arnold, and Maine Coast Semester head of school, Willard Morgan. The project was propelled in May 2007 when a group of MCS students presented the findings of Chewonki's first-ever carbon emission inventory to the staff and board and made a recommendation to further reduce emissions.

Chewonki will resist the popular path of organizations that buy offsets as a way to reduce their carbon emissions numbers. "Instead, we are proposing real on-the-ground reductions, which force us to scrutinize our behavior and to

make hard decisions about our operations. Buying carbon offsets can lead to a green-wash effect," said Willard. For this same reason, Chewonki will not claim a goal of carbon neutrality, but instead will pursue a schedule of ambitious carbon emission reductions.

The board's adoption of the carbon reduction goals opens the doorway for the next steps. Willard and Peter are now preparing a spreadsheet for the Finance Committee that will include actions Chewonki can take, their costs, and the CO₂ reductions they will yield. "This list is a starting point that will give board members a chance to understand the costs and benefits of CO₂ reductions," said Peter.

New Curriculum Helps Promote Clean Water

Thanks to a collaboration between Chewonki and the Pemaquid Watershed Association (PWA) in Damariscotta, a new teaching tool is available online and free of charge. The 29-page “Clean Water Activities Module” consists of hands-on activities for upper-elementary and middle-school students in science classes and informal teaching contexts. The five lessons complement Chewonki’s Clean Water poster, which was unveiled in March 2007 and widely distributed in Maine and beyond.

The curriculum was developed and field-tested by PWA education coordinator Tenley Wilder (pictured here with Peter Arnold), who worked closely with Peter Arnold and Brendan Kober in Chewonki’s Sustainability Office. Designed to meet the Maine Learning Results standards, the curriculum promotes critical thinking and problem-solving skills related to clean water and offers service-learning opportunities.

Rick Wilson (Camp Staff ’87, ’94) of Brunswick has been using the new curriculum to prepare a series of watershed initiatives and workshops and calls it “a great resource.” As a longtime history teacher,



community service coordinator at Brunswick High School, and executive director of the Cathance River Educational Alliance in Topsham, Wilson brings a practiced eye to evaluating curricula. “The beauty of this one,” he said, “is that it really takes teachers by the hand and shows them what the possibilities are.”

Staff at both Chewonki and PWA are delighted with the results of their collaboration. PWA executive director Donna Minnis hopes the poster and new lessons “will reach a wide audience, resulting in a change in current behavior and a future filled with clean water for everyone.” Peter Arnold concurred, though noted

that because the lessons are available online and free of charge, it’s impossible to track their distribution. “It’s possible we’re saving the world and don’t even know it,” he quipped. He hopes teachers will continue to request the poster.

An interactive version of the poster and the “Clean Water Activities Module” are available at www.chewonki.org/pathways. Chewonki is grateful to Poland Spring Water for funding the project.

Lower Field Says Good-bye to Flush Toilets

Even the veterans on campus have been befuddled by all the activity on the Lower Field! In a matter of months, one building has been replaced, a new building has gone up, two buildings have been retrofitted, and another building has moved across the field. What’s more, The Plaza—renamed The Ritz when it was replaced last fall—has reverted to The Plaza, owing to construction of the “real” Ritz this winter! A phone call from the *Chronicle* to Dick Thomas and Don Hudson had a bit of a “Who’s on first?” quality to it, but we finally sorted things out.

The Plaza, built in 1970 to house Chewonki’s first composting toilets, has been completely replaced, as have the Clivus Multrums in it. The new building was temporarily called The Ritz, but anyone who knew that should just forget it.

The cabin Boulder has moved across the field and now sits between Fo’c’sle and Quarterdeck, in a spot near a granite outcrop. As Don remarked, “Thus, thank goodness, we can conserve the name!” A new building has been erected where Boulder once stood. This is the *real* Ritz, a second composting bathroom facility, and it’s a beauty. Like our other camp bathrooms, it’s

named for a palatial hotel, as well as for longtime Papa Heron turned Yale lecturer Aaron Ritzenberg.

Finally, The Palace, which thankfully has not changed its location or name, has been retrofitted to house only seasonal, low-volume showers. The shower building near the path to the Waterfront is now an open freshwater rinse platform for swimmers.

The improvements were managed almost entirely in house, by facilities manager Don Lamson and carpenter Ken Wise, with assistance from MCS students. Flush toilets are now a thing of the past on the Lower Field. The composting toilets in The Plaza and The Ritz will save 90,000 to 100,000 gallons of water a year, not to mention the electricity that would be required to pump that water.

One final note: As Dick Thomas observed, “Despite all the changes, the Lower Field actually *looks* unchanged!”



This is The Plaza, not The Ritz!

MCS Takes Green Message On the Road

More than 6,700 independent school educators and administrators gathered in New York City on February 28 and 29 to attend the National Association of Independent Schools Annual Conference. Maine Coast Semester head of school Willard Morgan and David Liebmann (MCS faculty ’91–’96 and current Advisory Board member) offered a one-hour workshop titled “Greening the Campus and Curriculum: Next Steps.”

A standing-room-only crowd of 100-plus attendees filled the room as Willard and David presented approaches to sustainability taken by MCS and Shady Side Academy, an MCS member school in Pittsburgh where David is director of programs. Shady Side, a K-12 coed day school, is more typical of independent schools nationwide, whereas MCS presents a dramatic example of integrating green facilities and curricula in a small boarding-school environment.

In concluding their talk, Willard and David encouraged schools to use carbon emission reduction initiatives as an organizing framework for greening their campus and curriculum. They also highlighted the work of colleges and universities as models for what independent schools might do next. To learn more about the presentation, visit www.nais.org and enter “Willard Morgan” in the Quick Search.



The Countdown Begins!

BETTA STOTHART CONNOR

June 24, 2008, will be a red-letter date in Chewonki's history. After ninety-three years of offering a residential camp for boys, Chewonki will proudly open the doors—or to be more precise, the yurt flaps—of Camp Chewonki for Girls.

When Katrina Morosoff Stout heard the news, she nearly burst with delight. The niece of Kay Allen (who was the wife of Chewonki's founder), Katrina not only *knows* Chewonki's long history of serving boys, she *lived* it. Katrina spent many summers on Chewonki Neck as a young girl in the 1950s and 1960s.

"I was one of the 'Girls in Gray,'" she recalled recently, referring to the practice of dressing young female staff children in gray Woodchuck uniforms and allowing them to participate alongside the campers. In the early 1970s, executive director Tim Ellis hired Katrina as an art counselor, and she became one of the first women (not married to a staffer) to work at the camp in a non-kitchen capacity. Years later, when it was time for her own children to go to camp, Katrina's son Stewart attended Chewonki and her daughter Katie attended Alford Lake Camp until she was old enough to enroll in Chewonki's wilderness trips.

Katrina and Katie attended one of the first gatherings held last winter in New York City exclusively dedicated to Camp Chewonki for Girls. "I am just delighted that there is now a camp for girls that has Chewonki's philosophy, planning, and *substance*," said Katrina, who is a high-school art teacher in New Jersey. "It is wonderful to know that there will be a place devoted to fostering girls' appreciation and love of the out-of-doors as well as building their capacity for self-reliance."

Katrina speculates that Kay Allen would have been greatly relieved to know that the girls camp will not be situated on

Chewonki Neck, and she believes that Kay—who herself worked at a girls camp in Minnesota—would have been a stalwart supporter of any quality programs dedicated to the strengthening and development of young women.

It turns out there are many Chewonki "moms," staff people, and former participants who feel the same way. Genell Vashro, who was hired in January 2007 to lead Chewonki's girls camp efforts, has been deluged with expressions of support. "I was amazed by the number of women on the Chewonki staff who approached me to offer their support and enthusiasm," said Genell.

Boys Camp assistant Kate Fox and acting Girls Camp assistant Chrissy Burnham are two examples. "I am just so excited that Chewonki is creating a space for girls to grow and experience the incredible benefits of attending a camp," said Chrissy, who has been a familiar face at Chewonki for years in her role as camp staff, Outreach instructor, and wilderness trip leader. "Chewonki's style of camp is so unusual and special that no other camps will compare."

Chrissy attended camp herself as a young woman, and she's a staunch advocate of the girls camp experience. "Girls need time to grow *without* the presence of boys, to bond as friends, and to experience the incredible social networking that can happen when they are allowed to live together in a community," she said. "These bonds grow with each returning year. They are deep, and they are for life."

As of this writing, Camp Chewonki for Girls has enrolled nearly all of its 64 available spaces, and it expects to be fully enrolled when the canoes hit the water on June 24. In the meantime, Genell and Chewonki's land and facilities department have drafted an ambitious punch list of on-the-ground improvements that will begin straight after ice-out in mid-May.



All significant changes to the property need approval by Maine's Land Use Regulation Commission (LURC), which oversees planning and zoning for Maine's townships and unorganized areas. Chewonki's senior staff has been working closely with LURC to make sure we are in compliance.

"Working with LURC is almost always painless for Chewonki because our values of maintaining the maximum wilderness experience while having the least environmental impact are directly aligned with theirs," says Wilderness Programs director Greg Shute. Greg adds that Chewonki will do everything to protect the wooded shoreline of the girls camp (thus protecting the lake's pristine water). As it did at Big Eddy Campground, it will likely move buildings farther off the waterfront and replant the water's edge with indigenous vegetation.

Included on the equipment list for the site is a magnificent cedar floating dock that will extend along the shoreline, creating an easily accessible waterfront for the girls. A floating cedar swim raft with two ladders will be anchored offshore, providing a destination for swimmers to rest and soak up the sun, as well as offering a 360-degree view of the surrounding wilderness.

The dining area will be expanded, and new tent platforms, showers, and composting toilets will be built and installed. Camp furniture, including bunks and bookshelves, was built

"I am just delighted that there is now a camp for girls that has Chewonki's philosophy, planning, and *substance*."

—KATRINA MOROSOFF STOUT

over the winter by MCS 40 students and Chewonki's four resident AmeriCorps volunteers. Four 24-foot-diameter yurts are already on order from Pacific Yurt Inc. And the small collection of rustic cabins at the camp will undergo maintenance and improvements to ready them for staff housing.

Don Lamson, facilities manager for all of Chewonki's properties, and sustainability coordinator Peter Arnold have created a sustainability plan for the camp, which includes solar electric panels this spring, followed by a solar hot water system next year.

In the meantime, Genell has been busy interviewing and hiring an outstanding group of women who will comprise the summer staff. In early March, Jaimie Frailey (Outdoor

CAMP CHEWONKI FOR GIRLS*

Where? Fourth Debsconeag Lake, in the heart of Maine's North Woods

Who? Girls ages 11 to 17

When? June 24–July 15 & July 20–August 11, 2008

For more information: www.chewonki.org/girlscamp

**A one-week introductory program for girls ages 8 to 11 will be offered on Chewonki Neck August 18–22, 2008*



Our girls camp staff (from left to right): assistant Chrissy Burnham, director Genell Vashro, and assistant director Jaimie Frailey.



“Girls need time to grow *without* the presence of boys, to bond as friends, and to experience the incredible social networking that can happen when they are allowed to live together in a community.” —CHRISSEY BURNHAM

Classroom and Wilderness Trips) formally accepted the position of assistant girls camp director. During the school year, Jaimie teaches math at Gould Academy in Bethel, Maine, where she also coaches girls’ soccer and leads wilderness trips.

“Jaimie is just an outstanding woman. I am ecstatic to have her on board,” says Genell. “Her background as a teacher, an environmental educator, and a trip leader—not to mention the fact that she is absolutely adored by everyone on the Chewonki staff—made her the ideal candidate for the job.”

Chrissy Burnham, who returned to Maine in late February from Tanzania, where she nearly single-handedly

set up a health clinic for young women and girls, is serving as acting assistant director until Jaimie begins. Chrissy has jumped in with both feet and is actively working on camp promotions and enrollment, as well as helping Genell develop a rich and varied activities schedule for the girls.

Josephine “Phine” Ewing, an artist who sits on the Girls Program Advisory Committee (and who is married to Chewonki president Don Hudson), has created stunning new artwork for the camp’s first T-shirt. Phine has also been involved in strategic planning, mailings, and several other projects associated with the camp. Director of Development Lucy Hull has been carefully leading strategic efforts to raise funds to support the girls camp and its scholarship endowment fund (see below).

In late May a group of volunteers will travel up to camp for two consecutive work weekends. “There’s a ton of work that needs to get done before camp opens,” says Genell. “Heading up to Fourth Debsconeag Lake in May will provide a fabulous excuse to get into the North Woods before the blackflies hatch. Let us know if you’d like to join us!”

Lynn Harrison Challenge to Support New Girls Camp

Lynn Harrison of Bridgton, Maine, has provided yet another challenge to support the development of girls programs at Chewonki. Over the past several years, Lynn has become a great friend to Chewonki as a member of the Girls Program Advisory Committee and a multiyear supporter of our Canoe Expedition for Maine Girls. In each of the last four years, Lynn has offered a generous challenge grant as a way to inspire gifts to the Canoe Expedition. Those challenges were met each year by a growing family of girls program supporters.

Lynn has been a tireless advocate for the unique model of developing community in a diverse group of girls that has been the Canoe Expedition. She is delighted to help us take the next step of using this model in a full camp setting. Last fall, when Chewonki traveled to Fourth Debsconeag Lake to visit that potential future girls camp site, Lynn joined us.

Shortly after the Board of Trustees voted to purchase the property, Lynn

presented us with her greatest challenge to date: she pledged \$100,000 toward Camp Chewonki for Girls. If we can raise another \$100,000 by December 31, 2008—either for on-the-ground improvements, annual scholarships, or scholarship endowment—she will provide the matching \$100,000.

“Lynn’s extraordinary gift is clear evidence of how deeply committed she is to the success of Camp Chewonki for Girls,” said Director of Development Lucy Hull. “She is a thoughtful individual whose quiet dedication and leadership have inspired us in every way.”

Lynn, who is an avid paddler, outdoorswoman, and photographer, will likely join girls at the camp this summer as a visiting teacher, offering photography lessons and workshops in sun prints and pinhole cameras.

To join the Lynn Harrison Challenge, please contact our Development Office at 207-882-7323, or go to Donate Now at www.chewonki.org/support and choose “Camp Chewonki for Girls” under “Contribution Designation.”

Celebrating 94 Years— Camp Chewonki for Boys!

June 24, the opening day of Camp Chewonki for Girls, will also mark the opening day of our residential camp for boys ages 8 to 15 on Chewonki Neck—our 94th season! “We’ve been in touch with many campers this winter and spring and can’t wait to welcome them back to the Neck,” says Boys Camp director Garth Altenburg. The Osprey age group has already been full for weeks, and Garth expects the Herons, Owls, and Puffins to fill as well. As of this writing, there are only 36 spaces left! Our dates this year are as follows.

Full session (7 weeks, ages 10–15 only): June 24–August 11 (This session is full)
NEW! Five-Week Session (ages 10–12 only): June 24–July 29 (This session is full)
Session I (3 1/2 weeks): June 24–July 18
Session II (3 1/2 weeks): July 20–August 11
Ten-Day Session II-A (ages 8–11 only): July 20–29
Ten-Day Session II-B (ages 8–11 only): August 1–11
Guides Program (8 weeks, minimum age 16): June 17–August 13

For more information, visit www.chewonki.org and click on “Camp Chewonki for Boys,” or contact Garth Altenburg at 207-882-7323 or galtenburg@chewonki.org.



A Sleek New Design for Chewonki Boatbuilders

Chewonki’s Boatbuilders Expedition, one of our most popular coed wilderness programs for teens, has been overhauled and will emerge this summer with a fresh new identity. The familiar plywood, Greenland-style kayaks, which have been the standard since Chewonki launched Boatbuilders in the late 1980s, have been replaced with the Willow Sea Kayak, an all-new lightweight design.

“We are really excited about the Willow,” says Wilderness Programs director Greg Shute. “This kayak is attractive, light, seaworthy, and perfect for an extended voyage.” He adds that participants will enjoy making them, but they will *especially* enjoy paddling them.

Woodworker Bill Thomas, who has been designing and building boats for thirty years in his South Berwick shop, designed the sleek 17-foot kayak. Participants will join Bill and Chewonki waterfront and woodshop manager Carob Arnold this summer in the Chewonki woodshop and learn the craft of boatbuilding from frame to finish.

Beginning with a pre-cut plywood kit and using the “stitch-and-glue” method, participants will use hand tools and bronze ring nails to join and seal the kayak hull and deck panels. In between sessions in the woodshop, they will head down to the Chewonki waterfront to perfect their paddling skills. After just two weeks of construction, the boats will be ready to launch.

The second part of the program remains mostly unchanged: Participants will travel east along the bold coastlines, bays, and estuaries from Wiscasset to Penobscot Bay, spending their nights on a series of beautiful Maine islands. The trip will cover skills such as navigation, group leadership, and saltwater camping and will have a strong emphasis on coastal and maritime history.

And perhaps best of all, at summer’s end the Boatbuilders will take their beautiful new kayaks home!

For a detailed description of the Willow Sea Kayak and Bill Thomas Woodworking, visit www.billthomaswoodworking.com.

*A coed wilderness expedition for ages 15–17,
June 29–August 1, 2008.*

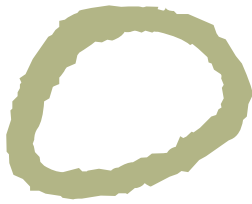




From Sheep to Shawl

*For twenty years, tending Chewonki's sheep
and learning how to spin and weave their wool
have been daily activities at MCS*

ELIZABETH PIERSON



In a chilly afternoon in mid-February, five Maine Coast Semester students found themselves standing in a patch of sunlight inside the barn, staring intently at the cold, wood floor. Spread before them was a hummocky pile of soft fleece that was deep chestnut brown with flecks of butterscotch and gray. "Isn't that Bessie?" asked Doug Gledhill, of Charlotte Country Day School in North Carolina. "Sure is," confirmed farm and woodlot manager Brad Johnson. Bessie is one of fourteen sheep that comprise Chewonki's flock, and six hours ago her wool had still been on her back.

The thirty-eight students of MCS 40 had watched the transformation during a pre-breakfast sheep-shearing demonstration. To their surprise, they learned that February is the traditional time to shear sheep, even in a cold climate like Maine's. Come March, this will ensure a safer lambing season for the ewes, Brad had explained over the buzz of his clippers. Gathered at the barn in winter boots and jackets, wool hats, and mittens, the students had marveled—and shivered—as Brad deftly removed Bessie's fleece in one long, glorious expanse. Now, for the five of them assigned to Work Program at the Farm, it was time to learn how to skirt a fleece—whatever that meant.

There to teach them was Bill Huntington, who runs a wind-powered fiber mill in Hope, Maine. Bill is the person who processes most of Chewonki's fleeces into yarn, and he figures it's in his own best interests to have a well-informed customer. Skirting, he explained, simply means removing the dirt, vegetation, and any worn wool from a raw fleece and getting it ready for processing.

"The two most important things you want to look for are the length and strength of the wool," Bill said. When everyone

had reached down and grabbed a pinch of wool from the middle of Bessie's fleece, he demonstrated how to test its strength both by feeling it and listening to it. "Yes, *listening*," he repeated with a smile when eyebrows went up. He gently pulled the fiber lengthwise while holding it up to his ear, and the students followed his lead. "Do you hear how it pops?" he asked. Eyebrows went up again, this time in amazement. "That's good. If it cracks, it's weak and likely to break at the mill."

So began an afternoon devoted to the art of skirting. With the rich smell of lanolin hanging in the air, the students knelt down and went to work at a job that, until today, they hadn't even known existed. Guided by Bill, they learned that the edges of a fleece typically get thrown away, not only because this is where bits of vegetation and manure tend to accumulate, but also because the fibers here tend to be coarse and easily broken. They learned that the technical term for washing a fleece is "scouring," and that it's done primarily to remove the lanolin, which is sticky and would gum up the processing machines. They learned that there's nothing processors hate more in a fleece than wood chips, which can damage the tines of carding machines, and that a skirted fleece should be stored in a closed but breathable bag. All this, and far more, passed hands that afternoon, first in the barn and then in Chapin Hall, where another eight fleeces awaited the fledgling skilters.

"I'd never seen or done anything like that in my entire life," Lucy Bates-Campbell of New York City and The Dalton School would say later.

For twenty years, working with sheep and their wool has been a daily part of the MCS experience. During morning chores before breakfast every day, it's the MCS students who provide hay and grain for the sheep and muck out their stalls. Each semester they attend a shearing demonstration, and in the

From Sheep to Shawl



spring they take turns on lamb watch in the barn at night. Although Bill Huntington processes most of the fleeces, and returns them a few months later in beautiful skeins of 2-ply yarn, the students also process a few. In this way, they learn to wash, pull, and card wool and to spin, weave, and knit; with the exception of knitting, these tasks are also part of morning chores and Work Program.

Sue West has taught art at MCS since its inception and is widely recognized as the “mastermind” (to quote colleague Amy Rogers) of the informal program she named “Sheep to Shawl” back in 1988. In agriculture and county-fair circles, that term refers to a timed event in which teams compete to shear a sheep, prepare the fleece, and spin and weave it into a finished shawl. Winners often finish in under five hours, a concept that makes Sue almost giddy with laughter. “I grabbed the name ‘Sheep to Shawl’ as a nice way to describe all that we do with fiber at MCS. It seemed to fit, given that our students muck out the stalls of the same sheep from which they’ll knit a hat,” she said recently. At Chewonki, the journey from sheep to shawl takes a bit longer than five hours. By Sue’s estimate, “it typically takes five years.”

Three weeks after the skirting, Sue was upstairs in the Allen Center, where Steph Wasser and Jenna Paul-Schultz were spending their afternoon weaving and spinning in a classroom that also houses six looms, four spinning wheels, and several bags of wool. Steph came to MCS from Newark Academy in New Jersey, Jenna from Friends’ Central School in Pennsylvania. As a cold rain fell outside, the two young women worked and chatted together on the bench of a two-person, twelve-harness loom.

Although both said everything they were learning in Sheep to

Shawl was entirely new to them, they quickly settled into a steady rhythm on the loom. Abby Holland, the MCS Spanish teacher, had introduced them to weaving the previous week, and they already took pride in the piece they were working on: a beautiful blanket in an overshot weave called Lee’s Surrender. “It will be 7 feet long when it’s done, which means there’s only 1 foot more to go,” said Steph. That doesn’t necessarily mean Steph and Jenna will see it finished, however. The blanket was started in the spring of 2002 by MCS 28, and every student who has worked on it has signed his or her name on a series of cards tied to the loom. “Very relaxing and calming to work on at 6:45 every morning! Enjoy!” wrote Emily Bronson of MCS 28. “It’s amazing to see how many people contribute to the production of one product. I’d never thought about that before,” said Jenna.

For Sue West, and many others, the glacial pace of weavings at MCS is part of their appeal. English teacher Amy Rogers has been teaching students how to knit and spin for years. “The fact that so many semesters work on one piece makes them even more special,” she said. Sue agrees. “These community projects emphasize the beauty of working long term over many years. We don’t rush. When students ask me at the beginning of each semester how long we’ll work on a particular project, I tell them “Til it’s done.”

Over the years, students have woven an exquisite variety of handbags, placemats, large and small pillows, baby or lap blankets, and yes, shawls. Some have been given as presents to departing faculty members; others have been raffled off at reunions. “It’s a wonderful feeling to spin wool and then weave it into a loom,” Sue said as she checked Steph and Jenna’s work. “We make a lot of different things, and they’re all beautiful.”



"I think we inject something into our students' lives that is increasingly disappearing from our world, and I think that gives them a nice feeling of connection. If you can make something that keeps you warm—a hat, a shawl—it gives you a feeling of confidence that you can take care of yourself, and have some control over the goods and services you use." —Sue West

Weavings may be the jewels in the crown of Sheep to Shawl, but they are not the only end-products. The other two are hand-spun wool and knitted items. Spinning is something all students assigned to the wool-prep morning chore learn, and it is this wool that is used in the weavings. Knitting is optional, although it's the rare student who doesn't at least try it. Many an MCS student knows that sitting around on the "Flintstone" furniture in the Wallace Center and knitting is a time-honored tradition. "Quite a few boys have come and said 'I won't do that,' but many do," said Sue. At least one semester joked that MCS is "where real men learn to knit." The sense of community that students develop over these knitting projects—not only among themselves but with faculty and staff—is one of the hallmarks of Sheep to Shawl.

In a day when it is rare for anyone to be fully conscious of where the products we use come from, Sheep to Shawl as practiced at MCS enables students to see what Michael Pollan (author of *The Omnivore's Dilemma*) calls "the full karmic price" of an everyday product. Like so many other things students encounter on Chewonki Neck, Sheep to Shawl brings them closer to a true understanding of where the products we consume come from, and the larger implications of that.

"There aren't a lot of ways in this era that you can see a process through from its inception to its end," says Amy Rogers. "Sheep to Shawl is a classic example of following a process—in this case, literally from the sheep's back to a finished product. I think it raises our consciousness tremendously. It's part of a larger story that people seldom know today."

"Learning a practical skill is part of it too," says Sue West. "I think we inject something into our students' lives that is

increasingly disappearing from our world, and I think that gives them a nice feeling of connection. If you can make something that keeps you warm—a hat, a shawl—it gives you a feeling of confidence that you can take care of yourself, and have some control over the goods and services you use."

As Doug Gledhill mopped up the skirting from the floor of Chapin Hall back in February, he confessed to having "a lot more appreciation" for his wool socks and sweaters. "I really enjoy the fact that we know where the wool comes from," said Lucy Bates-Campbell. "It definitely gives us an appreciation for what we use. The wool becomes more than a material. It's *real* here." Steph Wasser said, "At first, I found it difficult to see that a sheep's fleece would ever turn into something I'd knit. Now my cabinmates are teaching me how to knit a hat."

Back to that chilly afternoon in mid-February. Before Bill Huntington left Chewonki, he had something in the trunk of his Subaru to give the students. Together they walked out to his car and carried two large plastic bags upstairs into the Allen Center. Opening them, Bill produced the yarn he had processed from the last batch of fleeces. "Oh! It's beautiful!" said Sue, beaming and running one hand over a skein of soft gray yarn. The students were almost speechless. Examining the small tag attached to each skein, they realized this wasn't just Chewonki yarn. Each skein was identified by the sheep from which it had come. In their hands, the students were holding yarn from Lily, Maisy, Eva, Louise, Becca, Maude, Maddie, and Alice. Every skein would be for sale at Chewonki, and from it the students could knit their hats or scarves or sweaters.

Sheep to shawl indeed.

CHANGING LIVES



Matt Lunt (pictured bottom left here with four of his students and OC instructor Megan Phillips) knows firsthand how Chewonki's Outdoor Classroom can change lives. He's seen it happen through three sets of eyes: as a sixth-grade participant, as a three-year instructor, and now as a public school teacher accompanying his own students on the program. We're delighted that he agreed to share not only his insights but his incredible passion for changing the lives of young people. —*The Editor*



Forget the ecology lessons. Sometimes the most valuable thing a student finds in Chewonki's Outdoor Classroom is a new sense of self.

MATT LUNT

If you ever visit my apartment, odds are you'll see the evaluation letter my group leader, Bruce Davis, sent me after my sixth-grade Chewonki experience. It sits on a shelf in my kitchen amidst a collection of important pictures and memories from my past. As my box of memories gets pared down with each move, I revisit the reasons I keep the letter with me, and the evolving role that Chewonki has played in my life.

My five-day encampment at Chewonki in April 1992 with my class from Cape Elizabeth Middle School was life-changing for me. I say that without the slightest bit of sarcasm or hyperbole. Many of my classmates probably remember that encampment for the midweek blizzard that forced us in from the campsites in the middle of the night. Or the fact that we spent the last day playing in over a foot of fresh snow. But that's not what brought me back to work at Chewonki eleven years later.

For most of elementary school, I was a punk. I saw little reason to be engaged in what was going on in the classroom, and spent a good deal of time *out* of the classroom and in the principal's office. In fact, when I think back to middle school, the adults that I remember most vividly are all administrators and guidance counselors.

Chewonki is my earliest memory in which being useful to a group fulfilled a basic human need. I remember taking an afternoon to move sections of tree trunks back to our campsite in order to make fireside benches. I remember trying to lead the group through challenging activities. And most of all I remember falling in love with climbing at the Barn. I felt like I had a fresh start with an adult figure and a clean slate with my peers, even if just for one week. From sixth grade on, I slowly built on the positive self-image I felt at Chewonki until it was something I felt every day, in and out of school.

The funny thing is, every time I read the letter from my leader, I realize that the fact that I was going through a revelatory experience may not have been obvious to Bruce at the time. When I read his letter again after my own first season of leading these encampments, I was better able to piece together how the week actually went. See, after writing several encampments worth of evaluations, you start to pick up on the hidden messages deftly folded into these letters of positive reinforcement.

*"If you had set an example as far as listening and being respectful of others,
I think your leadership could have been the key to making the week here a
whole series of successes...*

*You were awesome around the campsite
when you got motivated and stuck to a task....*

*I hope to see you here this summer;
I'm saving a snowball with your name on it."*

—Bruce Davis (my italics)



Matt on his sixth-grade encampment at Chewonki.

Who knows, maybe from Bruce's perspective, the very same week that planted a seed of change in my adolescent heart felt like just another week sorting out preteen drama.

I certainly had weeks on staff at Chewonki when it felt like that. Fortunately, I always had my own sixth-grade experience as a source of motivation. Each week, I put every effort into creating an experience that would stick with students throughout their lives. I

was often exhausted at the end of the week and at the same time wildly inspired and satisfied by my work. My goal was to have at least one student each week who could look back and see the experience as an early opportunity to know themselves and their peers differently, to be proud of themselves and their accomplishments, and to gain a sense of community outside their family or close circle of friends. And, as is the nature of working with adolescents, I knew I would never really know who was having that experience. This was eventually the reason that I knew I needed to leave Chewonki and find a way to be a more consistent presence in the lives of children. While I may never find another job with the potential to affect students

so powerfully in such a short period of time, I now want to be around to see the impact take effect and to help nourish my students' growth along the way.

I came to teach at Chewonki with the knowledge that I wanted someday to work in a public school, but not yet. I was too excited about working in the outdoors to settle into classroom teaching. Nothing, I realize now, has prepared me better for working with young people. Each Monday, I met eight to twelve new students, some more eager than others, and began the process of creating a community in which each person could find a voice, offer a strength to the group, and learn by getting their hands dirty and interacting with the world. We accomplished impressive feats. Sometimes the feat was scaling a 12-foot wall. Sometimes it was finishing breakfast by 10:00 A.M. or showing up on time to the owl presentation. I taught a diverse mix of learners each week and met struggles and successes with all types of students. Most importantly, I learned to find the short, rejuvenating, and vital pockets hidden in each day where students and teachers can connect and simply enjoy each other's company.

I now teach in a classroom in which these skills are essential. This fall I began my first year of teaching in an alternative education classroom at a large public school. My students are slipping when they enter my classroom. There is no better way to say it. They are often a grade or two behind in reading, writing, or math, and it is often because they see little reason to try anymore. My job is to make their education more relevant,

to help them find their academic strengths, and to help them create a positive self-image at school. When I brought my students to Chewonki last fall, I knew exactly where we

"From sixth grade on, I slowly built on the positive self-image I felt at Chewonki until it was something I felt every day, in and out of school."

had to go to get off on the right foot. I even knew which campsite I wanted.

The week was outstanding. We persevered through group challenges and ecology studies during the day; told stories, played cards, and sang songs at night; and woke to cold mornings with hot breakfasts around a fire. After two cold nights in the standard four-person tents, we set up one large canvas tent for the entire group. The group developed a unique personality, and the students began breaking down barriers between each other and their teachers.

One of my students had spent the first two weeks of school suspended because of a fistfight. At Chewonki, we all watched



him shine, free from the stigma he carried through the halls at school. He smiled almost constantly and helped wherever he could. He was playful and completely engaged during our lessons, and he soaked in more information that week than in the prior month in the classroom. On day two, we visited the farm, and I have never seen a boy so lifted by the idea of eating nasturtium and kale fresh from the garden. He immediately wanted to know what we were picking and spent the afternoon memorizing the names so he could ask his mom to buy him seeds in the spring.

I had seen this sort of thing a handful of times before, but this was different. I knew that each shared experience, each meal, each challenge, each bout of giggling would be something we would share during the school year that lay ahead of us. It's spring now, and each day I look forward to seeing my students. There is more laughter in my classroom than I could have hoped for, and there are many days where my job seems easy because of the relationships I have built with my students. We began building those relationship at Chewonki, and our group personality has grown with time into something comforting and familiar to us all.

"For most of elementary school, I was a punk. I saw little reason to be engaged in what was going on in the classroom, and spent a good deal of time out of the classroom and in the principal's office."

Last week, a social worker interviewed my class to hear whether they thought our program was making a difference. I offered to leave so the students could speak freely, but they insisted I stay. One student said he felt he could trust each person in the group. Another enjoyed the freedom to learn in an active and social way. A third was grateful to have teachers he could relate to. All three of these ingredients were made possible and enhanced by our time at Chewonki. My students talked about that week as a chance to see their peers take

on different, positive roles, and cited the week as a source of confidence.

As I listened to all this, I thought back to last summer, when I interviewed for this job. The interview committee asked if I had any questions, and I had only one: "Is there room in the budget to take my kids to Chewonki?" If they had said no, it would have been a pretty big deal-breaker.

After graduating from Connecticut College, Matt Lunt taught Environmental Education at Chewonki from 2003 to 2005. He now teaches alternative education at Mt. Ararat Middle School in Topsham, Maine.

THE GREENING

*A new and improved
Wallace Center will be more
energy efficient than ever*

DON HUDSON



Don Hudson, Leon Garnett, and Amy Hinkley look at plans for the Wallace Center.

The story of making one of the “greenest” buildings in Maine even greener is one of serendipity and surprise, and it is steeped in Chewonki history and lore. The principle new characters are a creative architect—Amy Hinkley—and an inspiring carpenter and builder—Leon Garnett.

The story begins, however, ninety years ago when our campus was beginning to take its present shape.

The big red-trimmed barn and the traditional white house across the lawn have been the first things most visitors see at Chewonki since Clarence Allen tromped through the snow in December 1917 to inspect the new site for his three-year-old summer camp. When camp opened its doors the next summer, the Farmhouse, as it was soon called, became the hub of all indoor activity. It housed the kitchen, dining room, office, and a cozy living room for rainy day and evening gatherings. And “The Boss,” Clarence Allen, lived upstairs! As camp grew during its first three decades, inside space was at a premium. An extension to the Farmhouse dining hall in the 1920s provided a short-term fix but was not the answer.

The kitchen and dining hall moved across the lawn from the Farmhouse to new space built on the west side of the Barn in the 1930s. The heart of the campus has been defined by these bookend structures ever since. Campers from bygone times remember sitting patiently on the lawn between the buildings after lunch for “mail call,” or at strict attention on benches every Sunday evening, waiting to be called to the buffet line for their picnic supper. The mail circle is gone, but everyone in camp still lines up to begin the orderly entrance into the dining hall at mealtimes, and Sunday supper is still held on the lawn.

This second kitchen and dining hall served us well for fifty years. When a new year-round facility was envisioned for the same space, it was designed to be the “greenest” institutional building in Maine. Built between the summers of 1983 and 1984, the Wallace Center—named for George R. Wallace III, the first chair of the Board of Trustees—was a big initial step in developing our model “sustainable” campus. In the years since then, the Chewonki campus has become a small but prominent example in the Northeast of managing natural and energy resources.

The need for substantial improvements to the kitchen began to crystallize nearly ten years ago. As the farm has grown at Chewonki, so has the amount of Chewonki-grown produce and meat we consume. Common sense and health-department regulations separate food preparation from the processing of vegetables and milk coming directly from the farm. We need more space to process and store the farm’s bounty. Years of heavy use have also taken a toll. Floors, walls, counters, cupboards, walk-in cold storage, and equipment are all in need of repair or replacement.

OF THE GREEN

"Is it possible to repair and improve a space that is used almost 50 weeks of the year without interruption? Is it possible to have more space in the kitchen and dining hall *and* reduce energy consumption overall?" Our staff planning committee struggled with these questions for more than a year before reaching out for help. Thank goodness we found Amy Hinkley!

Amy knows us well. Her husband, Bill, teaches math in the Maine Coast Semester. Amy and Bill manage a blueberry farm in the hills of Waldoboro, and Amy maintains a solo architectural practice there. She graduated from Cornell University's College of Architecture and currently serves as an adjunct professor of architecture at the University of Maine at Augusta. In addition to previous projects for Chewonki, Amy has recently done work for Yale University's Sustainable Food Project and for the Kalaupapa National Historical Park in Hawaii.

Amy's first task was to help the staff Land and Buildings Committee refine an assessment of needs, not only for the kitchen and dining hall but for the campus as a whole. Amy and our facilities manager, Don Lamson, sought solutions while keeping the big picture in mind. Rather than brush our work off the table at the outset, they helped us explore our ideas thoroughly enough so that the best elements might be retained while letting go of the impractical or impossible.

The struggle to find the correct solution for the kitchen and the dining hall continued until Amy came up with the brilliant idea of moving the centerpiece of the Chewonki campus 44 feet to the east. Just like finding a keystone piece on which a puzzle hinges, Amy's move opened up a world of possibilities. With the Barn out of the way, we could build a new entrance, classroom, and kitchen in the vacated space. And we could do the work with minimal interruption to our camp or Maine Coast Semester schedules.

Leon Garnett, who led the crew of staff and students who built the original Wallace Center in 1983 and 1984, came aboard in late August to begin work. Leon is a leader in the region for building to the highest standards of resource and

energy efficiency. He's had a hand in every major project on Chewonki Neck since 1983, and we have learned that he never stops refining and improving his techniques.

In addition to finessing the calendar, the plan provides substantial improvements to the working atmosphere of the kitchen, and further refines the efficiency of the entire building. A large south-facing dormer will flood the kitchen and adjoining dining room with natural light; a new entry will provide a much-needed transition space between indoors and outdoors; and three new sets of double doors, opening onto a covered deck on the south side of the building, will create a more open and airy atmosphere in the summer.

The south-facing roof will support an array of new solar panels developed by Ascendant Energy in Rockland, Maine. Ours will be the first installation of panels that produce both hot water and electricity. We look forward to documenting just how much hot water we can produce with these first-of-their-kind solar panels. The panels will substantially reduce our use of electricity from the grid and propane to heat water.

By moving eastward to build the new kitchen, space opens up for a new, larger dishroom. Hundreds of staff and students who have labored in the confines of the old dishroom will appreciate the news that the old Hobart will be replaced in a larger space by a new machine. Amy has found a machine with more than twice the capacity, yet it works with 70 percent less water and less power per cycle, providing substantial energy savings.

Solar hot water and electricity, a flood of natural light, energy-saving light fixtures, efficient appliances and refrigeration, and super insulation will make the newly improved and renovated Wallace Center even more efficient than it was when originally built twenty-five years ago. The new kitchen will be complete by June, and renovations to the dishroom, dining hall, and new south facade will follow next year. We'll continue to follow the story, and to report on the energy and resource savings we're achieving, in future issues of the *Chronicle*.

Errata: The Heavy Lifting of Calculation

We're grateful to Brandon Stafford (MCS 3; former Camp Staff, MCS faculty, and staff technology guru) for calling our attention to a few errors in our cover story last fall on carbon emissions at Chewonki. In the Electricity Emissions table, "Kilowatt Hours per Month" should have read "Kilowatt Hours per Year." In the Total Emissions table, a line was inadvertently omitted: it should have indicated that commuting accounts for 49 metric tonnes (MT), or 14 percent of total carbon emissions. And finally, we should have overridden the spell-check, which annoyingly changed "metric tonnes" to "metric tones." The Chewonki Climate Inventory is an ongoing process, and since publication of the last *Chronicle* our baseline year numbers have been revised. These back-calculations increased our 2005–2006 emissions by 17.33 MT, for a final total of 375.84 MT.

A Fond Farewell

“**W**e’re going to miss this place a great deal,” says Brad Johnson, who will soon move to Vermont with his wife, Emily LeVan, and their daughter, Madeline. Brad and Emily have lived on Chewonki Neck for more than a decade, and four-year-old Maddie has grown up here. “To say that all three will be missed is an understatement,” says Don Hudson, adding that the trio has won the hearts of staff and students alike during their time here.

Brad came to Chewonki in 1996 as the admissions director and Environmental Issues teacher for Maine Coast Semester and later moved to the farm—first as the farm apprentice, then as the assistant farm manager, and since 2005 as the farm and woodlot manager. Emily was an MCS Spanish teacher, nurse’s assistant, and wilderness trip leader before becoming a full-time mother, getting her nursing degree, and rising to the ranks of the top women marathoners in the United States.

“Chewonki is very much home to us,” Emily said recently. “This has been the cornerstone of our lives since Brad and I graduated from Bowdoin.

Especially after Maddie got sick (see sidebar), we’ve been supported in so many ways. We have Chewonki friends scattered from Portland to Rockland, and it will be hard to leave them.” At the same time, Emily and Brad agree wholeheartedly in the benefits of change. “Change is useful and good,” said Brad. “I’m a strong believer in that. Every institution, and especially nonprofits, needs new people, new ideas, new energy.”

Home in Vermont will be a beautiful nine-acre farm and 1850s farmhouse in Randolph Center. An important plus is its relatively easy access—about a 45-minute drive—to the Dartmouth-Hitchcock Medical Center in New Hampshire, where Maddie will continue her cancer treatments. Emily hopes to land a full-time nursing job, and Brad will look after Maddie and manage their small farm. “Maddie and I have a long list of projects to tackle on the days when she feels well,” he said. “There are fences to mend, chicken and pig pens to build, and a garden to expand, to name just a few.” By fall 2009, they hope Maddie will be in remission and attending kindergarten, at which time Brad will likely expand his farming operation and perhaps get involved in educational work.

The family plans to remain on campus through the end of MCS 40 and will move to their new farm in June. With a next-door neighbor who’s an organic dairy farmer and lots of agricultural activity in the area, they expect to feel right at home in no time. Their new address will be 2435 Ridge Road, Randolph, VT 05061.



Photo courtesy of Paul Cunningham, *Times Record*.

Emily and Maddie's Two Trials

Emily LeVan, the 14th ranked qualifier for the 2008 U.S. Women's Marathon Olympic Trials, says running has taken her places she never could have imagined when she first toed the line at the Sugarloaf Marathon in 1998. One of those places has been a world of blood transfusions, spinal taps, bone marrow biopsies, and chemotherapy. For Emily and her husband, Brad Johnson, life turned upside down when their daughter Maddie was diagnosed last November with leukemia. Emily never expected she would continue training for the Olympic Trials on April 20, 2008, but with Brad and Maddie's encouragement, she has done just that—and far more.

On January 18, in celebration of Maddie's fourth birthday, the family announced the launch of Two Trials, a fundraiser for the Maine Children's Cancer Program. They chose the name because they realized they had embarked on a new kind of marathon—one that, if all goes well, will last the next two to three years of Maddie's life. The goal is to raise \$52,400—26.2 miles x Two Trials—and that figure is indeed in sight. As the *Chronicle* went to press in late April, Two Trials had raised \$46,000.



Both at Chewonki and beyond, it's been an inspiration to watch Emily, Brad, and Maddie navigate their new world. "We feel very strongly about teaching Maddie to give back to your community—that you can take a not-so-good thing and turn it into one," Emily said recently. "We're trying to turn this into something positive both for us and for all the kids in the future who'll have to deal with leukemia." Although Maddie is responding well to treatment, the side effects of her medications are a daily challenge. "We feel incredibly fortunate to have the resources and support of the Maine Children's Cancer Program available to us, and we want to ensure that other families can continue to benefit from it," said Emily.

To learn more about Two Trials, childhood leukemia, and the journey of a remarkable family through treatment and toward the Olympic Trials, visit www.twotrials.org. Donations can be made online and will continue to be accepted after the Olympic Trials. Emily and Brad say they're amazed at how many people and organizations have contributed to the fundraiser. Every donation, however big or small, will help them reach the finish line. As they said on Maddie's fourth birthday, "Step by step, we can all make a difference."

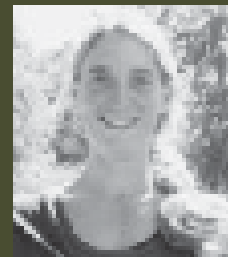
Margaret Steps into Brad's Boots

We're delighted that Margaret Youngs, currently the assistant farm manager, will be Chewonki's new farm and woodlot manager. Margaret turned to farming after a brief stint as an admissions counselor at College of the Atlantic (where she graduated in 1996 with a B.A. in human ecology). Over the past nine years she has worked on four diversified organic farms, including Chewonki's. Before arriving here, she spent four seasons co-managing Mandala Farm, an organic horse-powered farm in Gouldsboro, Maine.

"Margaret will do a great job," says Brad Johnson. "She's an outstanding gardener and farmer who really knows what she's doing."

Stepping into the position of assistant farm manager will be Jeremy Tardiff, formerly of Bartlett Tree Experts in Scarborough. Jeremy began work at Salt Marsh Farm in early April, so he could have time to overlap with Brad. He and his wife will move into the Gatehouse when Brad and Emily leave. Farm apprentice Abby Huckel remains an integral part of the farm staff and will be with us until late December or early January of next year, at which time her position will be filled by the next apprentice.

As Brad and his family prepare to move on, they do so knowing that Salt Marsh Farm will be in excellent hands. As Brad said recently, "Chewonki is blessed with one thing above all else: it's amazing people."

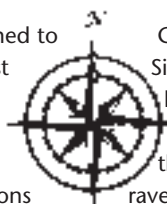


Family Camp Goes North

*Join us for a wilderness Family Camp
at our newest facility in the North Woods*

W

hen Family Camp returned to Chewonki's schedule last summer after a lapse of several years, no one was more pleased than director of alumni relations



Dick Thomas. "For staff and participants alike, it was a terrific weekend," he said. "It hadn't even ended before folks were clamoring for us to plan the next one." The only hitch was that Chewonki Neck was already booked for the Maine Coast Semester's twentieth reunion. Not a problem, Dick determined. "We'll just go north instead!"

So north it is, to Fourth Debsconeag Lake in the heart of Maine's North Woods, where families and friends of Chewonki will have the opportunity to enjoy a rare camp experience at our newest facility. Fourth Debsconeag Lake is an extraordinary place. The lake and camps are bordered by almost 90,000 acres of preserved wild lands. To the west is the state-owned, 43,000-acre Nahmakanta Unit, and to the east is The Nature Conservancy's 41,000-acre Debsconeag Lakes Wilderness Area. These surrounding lands provide visitors to Fourth Debsconeag an unmatched wilderness experience.

Chewonki is not a newcomer to this part of Maine. Since the early 1950s our groups have paddled and hiked throughout the region, and in 2002 we became the owner of Big Eddy Campground on the West Branch of the Penobscot River, a short raven's flight from Fourth Debsconeag.

Debsconeag Wilderness Camps is also the new home of Camp Chewonki for Girls. But for three glorious days of Family Camp, it can be your home away from home. Share a lakeside cabin with your family; enjoy delicious meals in our dining lodge; reminisce with old friends and meet new friends; explore the forest and granite ledges that surround the rustic cabins and waterfront. Join in staff-led activities or explore on your own. There will be plenty of time for fun and relaxation, including:

- Hiking nearby trails for views of Katahdin
- Hiking on the Appalachian Trail
- Walking the gentle paths that surround the camps
- Exploring Nesuntabunt Mountain
- Canoeing, sailing, and kayaking
- Fishing
- Learning about the area's rich natural history
- Swimming in the clear, pristine lake.

Family Camp Particulars

August 14–17, 2008

Adults: \$365

Seniors and Children age 6–16: \$185

Age 5 & under: Free

Early registration discount of 10 percent before June 1

Prices include meals, activities, and a rustic cabin with bunks. Bring your own pillow, sleeping bag, or bedding. If you're interested in sharing a yurt with another family, contact us for reduced price information.

We hope you'll join us! For more information, contact Dick Thomas at dthomas@chewonki.org or 207-882-7323, ext. 124. Or download a registration form at www.chewonki.org/alumni/events.asp.



Join us in celebrating 20 Years of MCS

August 15-17, 2008

CHEWONKI FOUNDATION



- Stay in cabins or camp out on Chewonki Neck
- Enjoy farm-fresh food with your classmates and MCS faculty, past and present
- Take a walk to the Point (and see how many species you can remember!)
- Get your hands dirty on Work Programs
- Cool off at the waterfront
- Catch up with friends around the Adirondack chairs
- See campus changes, including the expanded Wallace Center
- Learn about Chewonki's response to climate change
- Bring your family with you!

Scott Andrews, Sue West, Amy Rogers, Don Hudson, Dick Thomas, Willard Morgan, and much of the Chewonki staff will all be in attendance. We look forward to greeting you back on the Neck!

For more information or to register, visit www.chewonki.org/alumni/20yearsofmcs.asp.



MCS 1, Fall 1988



MCS 40, Spring 2008

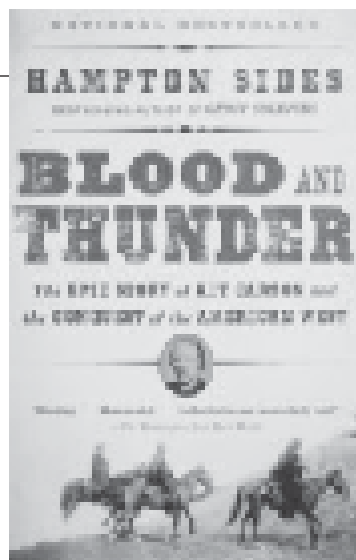
Blood and Thunder: The Epic Story of Kit Carson and the Conquest of the American West by Hampton Sides

Although it may seem far-fetched to those of you who have been in my classes, I don't usually gravitate toward history for my pleasure reading. I enjoy novels much more and confess to devouring an occasional mystery or thriller. Once in a while, though, I jump into a good book about some aspect of American history, and Hampton Sides's *Blood and Thunder* (Anchor Books, 2006) is one of the best books I've read in a long time. I couldn't put it down.

Perhaps I found it so intriguing because it is such a huge story geographically and culturally. Sides's scope is as sweeping as the western landscape itself and includes chapters on the Anasazi, the origins of the Athapaskan-speaking Navajo, the Mexican and Civil wars, Mountain Men, and the transition from Native American nomadism to the reservation system. If you've ever traveled through the Southwest, his richly evocative descriptions—of labyrinthine canyons, lush grasslands, and “staked” plains—hit the mark perfectly.

Mostly, though, the book is about the people who made the West more than just a

geographical location: Narbona, the powerful Navajo leader and perhaps the only man who could have kept the peace, is stupidly, if accidentally, killed by the U.S. military. Charles Bent, the trader and New Mexico governor whose eponymous fort served as the crossroads of the Santa Fe Trail, is brutally murdered in the Taos uprising of 1847. John C. Frémont, the Pathfinder, whose ego was as large as California, insinuates himself into countless schemes to achieve fame and fortune in California, both before and after it becomes a state. Others in this distinctly American pageant include Thomas Hart Benton, Frémont's father-in-law and the champion of Manifest Destiny; Nicholas Trist, who disregarded his instructions from President Polk, negotiated the Treaty of Guadalupe Hidalgo in which Mexico lost nearly half its land, and said: “Could those Mexicans have seen into my heart at that moment, they would have known that my feeling of shame as an American was strong...I was ashamed of it, most cordially and intensely ashamed of it.”



Of course, the story of the settling of the American West is the story of Kit Carson—mountain man, trapper, scout, and soldier—the most famous westerner of them all. In many ways, the popularity of the dime novel (called “Blood and Thunders”) in the 1840s and 1850s was sparked by Carson's exploits, both real and imagined. Diminutive, illiterate, reticent, brave, heroic, incapable of ignoring duty, Carson is the object of an impossible heroism born in the minds of easterners. He is

both the champion of the West and its inhabitants, and the chief agent of their change.

The settling of the American West was a tragic—and very human—story, and Kit Carson embodied it. Although he probably understood and respected the Navajo as well as anyone, he presided over the destruction of their way of life, and forced them on the Long Walk from their sacred mountains to the new reservation at Bosque Redondo near the Texas border. He understood what he was doing, but he couldn't disobey his commanding officer, and couldn't come up with a better way to solve the clash of cultures between Whites and Indians that he knew was inevitable.

SCOTT ANDREWS

STEP IT UP

FOR SUSTAINABILITY

MEG GIULIANO, MCS TEACHING FELLOW

According to the EPA, the United States now has more than 180 million computers in use. These machines consume nearly 58 billion kWh per year (about 2% of our electricity consumption in 2006). The average desktop PC uses 65 to 250 watts of electricity in active mode. If your computer draws 200 watts and is left on 24 hours a day, every day, and your electricity costs \$0.10 per kWh, your annual computer-related energy costs could reach nearly \$175—and would result in emissions of almost 1,700 pounds of CO₂ equivalents.

So, what can you do to reduce your emissions *and* your bills?

- Set your computer's options to go automatically into sleep or standby mode after 20 minutes of inactivity. This simple trick reduces energy use immensely.
- Turn your computer OFF at night. While powering on and off can cause small amounts of thermal stress in a computer, it will not adversely affect the equipment within its “technologically useful” lifespan.
- Always shut off your monitor when you won't be using it for an extended period.
- If you can, get a laptop; they use far less energy than PCs. Also, Macs tend to be more efficient than their PC counterparts.
- Update your monitor from an electricity-guzzling CRT (cathode ray tube) to a

more efficient LCD (liquid crystal display). New technology is usually much more efficient than old equipment.

- Be aware of the energy consumption of your computer accessories (printers, scanners, speakers, etc.), and be sure to shut them off too when not in use.
- *Take note:* screensavers do NOT save energy—in fact, they often use more electricity than letting the computer sit idle.

The bottom line: If you turn your computer off when not in use, you will reduce greenhouse gas emissions *and* save money on your electricity bill.



This column takes its name and logo (with permission) from the Step It Up 2007 National Day of Climate Action that took place on April 14, 2007. For more information, visit www.stepitup2007.org.

People

1940s

Don Hudson was delighted to receive a lengthy email from **Bill Risk** (Camp & Camp Staff '46, '49-'51, '54, EcoWeek '73), responding to Don's promise in the last *Chronicle* to turn off the water when he brushes his teeth. "I have been a practicing dentist for over forty years, and in terms of water conservation I do not feel that your tooth brushing comments go far enough," wrote Bill. What really matters when brushing, he noted, is the mechanical action of the brush bristles. "Since toothpaste is desirable but not an essential part of good oral hygiene, don't use it. In the strictest ecological terms, tooth brushing could and should be accomplished without water being consumed." Bill resides in Lafayette, IN. "I think often of my happy summers that I spent at Chewonki and am grateful for the appreciation of the environment that I learned from my uncle [Clarence Allen] and his staff. Keep up the good work."

1950s

It was great to see **Chip Dunn** (Camp '57-'59) and wife Cynthia at our booth at the Common Ground Fair last September. They stopped by and gave the Chewonki cheer!

Ned Loring (Camp '55-'58) is planning a trip to Bermuda and hopes to catch up with old Chewonki friends. He says son **Teddy Loring** (Camp '97-'99) is a happy sophomore at the University of Vermont.

1960s

Bob Loring (Camp '61,'64-'66) of Bethesda, MD, has warm memories of his family's long association with Chewonki. Father Bill Loring was a student of Clarence Allen's in Boston. Brother **Bill Loring** was a camper in the late '50s and then a sailing instructor. "He's now retired, cruising the Caribbean and winning trophies in some cruising rallies." Bob remembers spending most of his last year at camp, as a CIT, helping with the sailing program, ably led by **Peter "Moose" Morosoff** (Camp '51-'57, Camp Staff '61,'63-'67). Bob now works on "political reforms that will hope-

fully lead to better governance for a host of policies, including energy, environment, and ethics."

1970s

Dick Thomas was excited to see a familiar face on NBC nightly news last September: **Jim Balog** (Camp Staff '71-'73) was featured in a segment on global warming. Jim is an internationally acclaimed nature photographer who is currently documenting the shrinkage of remote glaciers, using solar-powered cameras that automatically snap photos every hour—and will do so for more than two years. On March 1, Jim was awarded the North American Nature Photography Association's top honor, Outstanding Photographer of the Year for 2008. And on April 16, he received the prestigious Rowell Award, which honors "that adventurer whose artistic passion illuminates the wild places of the world, and whose accomplishments significantly benefit both the environment and the people who inhabit these lands and regions." You can learn more at www.jamesbalog.com.

We were delighted to hear from longtime friend **Duncan Campbell**, who has not visited Chewonki in many years but says the *Chronicle* and other publications keep him up to date. "You have come a long ways from when I first visited back in the 70s," he writes, "and I congratulate you on all your conservation and environmental endeavors. Maybe one of these days before I get too old I will come back your way and stop in for a visit. I am still enjoying the South Jersey beach skiff I bought from Chewonki and can still get in and out of a canoe. So even at 81 I find life good."

"Just about everything in my life and work relates back to fifth grade when our school (Manchester, MA) spent a week at Chewonki in June 1972," writes **Catie Mains** (Maine Reach '79, Camp Staff '80). In 1981 Catie went on to Evergreen State College in beautiful Olympia, WA, and she has lived there ever since. "I'm a biologist with the Washington Department of Fish and Wildlife—16 years so far."



Warm Sweet Home: Gordy Hall!

Chewonki's newest cabin, Gordy Hall in Osprey Circle, is completed and getting rave reviews. On a cold, wet day in March, when the eight young women of MCS 40 who currently live there were asked what they like best about the cabin, they all cried "the insulation!" They also cited the southern orientation and abundance of natural light, attached woodshed, and bicycle-powered generator. They're keeping a riding log, and at the end of the semester will be able to calculate how much of the cabin's power they produced. "I love riding the bike," said Steph Wasser. "I'm killing three birds with one stone: getting my exercise, reading my homework, and charging the battery." Gordy Hall was built entirely by the students and faculty of MCS 37, 38, and 39, with guidance from carpenter Ken Wise. It is named for former camper, chairman of the board, and longtime trustee and supporter Gordy Hall (pictured above with students of MCS 39). The building is also getting some national attention. It is prominently featured in the Spring 2008 issue of *Independent School*, a publication of the National Association of Independent Schools. To order a copy of the magazine, go to www.nais.org.

1980s

Thomas Appleton (Camp '86) is enjoying life in Boston with his wife, Monique, and two-year-old son, Kai.

"Busy" seems to be the word for Maine resident **Amy Berube** (MCS 3, Camp 1989). She's working full-time as a medical social worker and community liaison for CHANS Home Health, is a field instructor for a University of New England MSW student, and is the volunteer director of social services for the OASIS Free Health Care Clinic in Brunswick.

Paul Boothby (Camp Staff '87-'88, '90) is a minister in the Unitarian Universalist Church, currently serving in Virginia parishes.

Chris Riley, outdoor equipment and logistics manager, was delighted to discover while leading an MCS camping trip in February that among the students was the daughter of his first Chewonki trip leader, **Marie Corbin-Keane** (EE Staff '82-'85). Marie led Chris on a sea kayaking trip when he was 13 years old. Who could have guessed that 20 years later Chris would take Marie's daughter, **Katlyn Keane** (MCS 40), on her first Chewonki trip?! Marie and husband **Steve Keane** (EE Staff '83-'85) are schoolteachers in Bethel, ME. In the summers they operate Wild Rivers Adventure Guide Service.

Daniel Da Prato (Camp '80) of Italy writes: "My daughter is 3 and

my son is yet to be born, but I am already looking forward to bring them to the US. A summer in Chewonki will definitely be a gift for the life as it was for me."

Kirstin George Edelglass (MCS 2, Camp Staff '02-'05, Advisor) and husband William are pulling up their stakes in Waterville, ME, this summer and moving to Marlboro, VT, where William will be teaching philosophy at Marlboro College. On their most recent visit there, Kirstin had lunch with history professor **Tim Little** (Camp '55, Camp Staff '55, '62, '65, Family Trip '78, EcoWeek '81), who had fond memories of his camper "Donnie Hudson," and students **Dilyara Khasianova** (MCS 38) and **Geri Medina** (Camp '05). It turned out Geri and Kirstin had met once before, on the banks of the Allagash when the Canoe Expedition for Maine Girls (which Kirstin designed and used to lead) replaced the broken setting poles of Geri's party! Kirstin looks forward to continuing to serve as a Chewonki Advisor and to hosting any Chewonki folks passing through southern Vermont.

Andrew Fisher (Camp '86-'88, '91-'93, Camp Staff '94, MCS 11) and wife Elda have made "a happy move to North Carolina." Elda has started a residency in maxillofacial surgery at UNC-Chapel Hill, and Andrew is practicing law in Raleigh. "We love the area but miss the Neck and hope to get back soon for a visit! Hello to all."

James Gibbs (Camp Staff '80, Maine Reach '80-'81), a faculty member at the SUNY College of Environmental Science and Forestry, recently received the Excellence in Research and Scholarship Award from the SUNY Research Foundation. He has also received the Distinguished Teacher Award, voted on by the student body, twice in the last four years. His interests include biodiversity conservation and ecological monitoring, conservation biology of Galapagos tortoises, endangered species in New York, and service in Tanzania. He is the author of many articles and four books.

Stephen Harmon (Umbagog '88)

has just returned to Korea, where he plays with the Army Band in the 8th Infantry Division. Brother **Russell Harmon** (Camp '84, '86) is still in Seattle, where he is a computer consultant.

David Torruella (Camp '86, MCS 1) and brother **Pau Torruella** (Camp '84-'85, '87, Camp Staff '93, MCS 8) have both settled in Boulder, CO, where they love the mountains and outdoor life.

1990s

Hans Albee (Camp '90-'92, '94-'96) was married last summer on the shore of Damariscotta Lake in Jefferson, ME, to Jennifer Jackson, a graduate of Hampshire College and a seventh-generation Jeffersonian. The couple met on a windjammer out of Camden, and Hans's proposal came a year later in the back of his pickup at the Common Ground Fair. **Mark Albee** (Staff '90-'05) presided over the ceremony at the home of the bride's parents. The newlyweds spent their honeymoon herding island sheep with local farmer and Chewonki friend **Lee Straw**. They currently live in Jefferson and are looking for a house or land on which to build.

Maureen Bayer (Camp Staff '97-'98), "sick of city life and longing for redwoods and hiking trails" in her backyard, has moved to Marin County, where she's awaiting results from the California Bar Exam and responses from environmental law jobs to which she's applied in northern California. Brother **Colin Bayer** (Camp '93, '95-'96) is still in Los Angeles but anticipates a move to Chicago.

"I miss stormy afternoons and bitter cold winds—to remind me that there is something else out there to pay attention to." That's the word from **Sean Bohac** (MCS 4, Camp Staff '92), who is enjoying year-round sunny weather and four-season gardening in San Diego. "I am so proud of the example that Chewonki sets for all those in eye, or ear shot!" he writes.

It was wonderful to hear from the Brodys, who for the first time in 17 years didn't have a child at camp last summer! **Adam Brody** (Camp

'90-'93, '96-'97, Camp Staff '98-'00) is living and working in Montana. Brother **Luke** (Camp '94-'96, '98-'01) was married last July and is living and rock climbing in Portland, OR. And sister **Cara** (Camp '99-'02, Camp Staff '03-'05, MCS 29) will graduate from Skidmore this spring. Her plans include a career in the theater and finishing the last 20 miles of the AT in Maine.

Jon Connolly (Camp '96-'01) is a senior at Yale. Younger brother **Alex Connolly** (Camp '99-'04) is a freshman at Stanford.

Congratulations to **Jean-Marc Duplantier** (Camp Staff '91-'92, '96) and wife Sarah Gillen, who welcomed a new daughter, Marie-Irene, on May 9, 2007. They currently reside in Indiana.

Forrest Fleischman (Camp '92, '94, '96, MCS 18, Camp Staff '01, Farm Intern '03-'04) has moved from India, where he spent 10 months as a Fulbright scholar, to Indiana, where he's started a PhD program in public policy and environmental affairs at Indiana University. "I can receive mail, and for that matter, be found in person, at 1109 S. Fess Ave. Bloomington, IN 47401, but the best way to reach me is at forrest.fleischman@stanfordalumni.org." To his surprise, Indiana is not "just a flat boring state full of soybeans and basketball fans. Bloomington is one of the nicer college towns I've seen, and the reality is that I'm as likely to run into the next Yo-Yo Ma as the next Bill Monroe here." He's especially pleased to have a fruiting paw-paw tree in his backyard and has plans to plant pecans and other fruit and nut trees. For more news, as well as photos, visit Forrest's "irregular" blog at <http://forestpolicy.typepad.com/forrest>.

Dan Fox (Camp '95-'00, Camp Staff '02-'05) is a certified kayaking instructor and heads up kayaking activities for the Outing Club at Duke, where he's now a senior. He's majoring in physics and math and considering a career in teaching, consulting, or nonprofit work—but not until he and a friend take six months to hike the Appalachian Trail. Last summer,

Dan kayaked the Ottawa River and some of the white waters of the West with **Jim Quivey** (Camp '95-'00, Camp Staff '01-'05). "It's good to be Dan Fox, isn't it?" writes Dan's mom. She says that she and Jim's mom credit the Chewonki community "for helping to shape our young men into the fabulous human beings they have become."

It was great to see **Eric Hakanson** (Camp '99, Camp Staff '02-'03), who stopped by for a visit this fall while visiting his parents in Boothbay. Eric is an educational consultant for Pearson Prentice Hall in Greenville, SC.

Nick Heintz (Camp '95-'99) recently graduated from SUNY Plattsburg with a degree in Adventure Based Counseling. He is living at home in Clinton, NY, and substitute teaching in Utica while working on his resume and job hunting. "I have really advanced my skills in rock climbing over the past four years," he writes.

Ned Irons (Camp '97, Camp Staff '98-'03) is living and working in Washington, D.C., where he says "life is going pretty great right now." He works at August Jackson, a marketing communications agency. "I'm sure that people tell you this all the time," he wrote Dick Thomas, "but I think about my time as both a camper and staff member every day. There are lessons I learned at Chewonki that I apply throughout my life, and thinking about that time and place is so grounding and helpful. Thank you for all of that. Please tell everyone I say hello."

Here's all the news from **Loryn Kipp** (MCS 9, Camp Staff '93-'94, Kitchen Manager '01-'05): "I still live in Maine. I still bake and I look forward to shoveling a lot of snow. Maybe."

Max Lavine (Camp '96-'97, Camp Staff '02, MCS 22) is working for a production company in Los Angeles and keeping up his own writing. It's a far cry from Maine, Middlebury, or Texas, but his mom reports that he is happy there amid good friends and interesting work. Younger sister **Abby Lavine** (Camp '03) is enjoying her first year at Wesleyan University, and especially her involvement with the dynamic Wes Environmental Action Group. "Thanks for planting

the seed when she was a Chewonki camper," writes her mom.

It's wonderful to have **Stacy Kirschner Linehan** (EE & Camp Staffs '97-'01) and husband **Ryan Linehan** (Wilderness Programs staff) as neighbors just down the road. They're the owners of Treats, a small gourmet shop in Wiscasset. "Treats is going well as we greet new people and make new paths," writes Stacy. Their all-natural "red sauce," made on site from local ingredients, has been a hit, as has their honey, which comes from bee-hives in nearby Hope. Their best news, however, came on April 7, 2007, with the birth of Kestrel Sage, who joined big brother Sawyer. "We look forward to the day they both can experience a Chewonki program."

Matt Lunt (EE '92, EE & Camp Staffs '98-'99, '03-'05) is teaching alternative education at Mt. Ararat Middle School in Topsham, ME. We're delighted that he agreed to write a story about his experiences at Chewonki for this issue; see p. 14 for a must-read.

Rumor has it that **Graham Majorhart** (Camp '97-'99, '01) was spotted descending from the Tiger's Leap Gorge in South China, on a break from Middlebury.

Twins **Andrew** and **William McIntyre** (Camp '98-'00, '02) are both in college, Andrew at Stanford studying engineering and William at UC Santa Cruz studying music and American Studies. Andrew is on the gymnastics team, and William is skiing, surfing, and mountain biking. Brother **Duncan McIntyre** (Camp '92-'94, '96) is working for a venture capital company in Boston and sailing and skiing a lot. Sister **Sally McIntyre** (Camp '98-'99), another outdoor lover, is a graphic designer in Boston. "Chewonki meant so much to all of them," writes their dad, Angus McIntyre.

Andy Moore (Camp '90, Camp Staff '97-'98) was forced to take some time off from fencing because of a fractured hand but otherwise is doing well. He spent last summer in Cambridge, England, studying neurobiology and European history.

Rich Mumby (Camp '93-'95) visited Chewonki over Labor Day weekend and found it "as fantastic as I remember." He's back in New York City after graduating from business school at Dartmouth. "My two years in New Hampshire were a great reprieve from the city life and certainly reminiscent of my time at Chewonki."

Max and **Sam Nigrosh** are both doing well out there in the big world. Max (Camp '96-'98) graduated from Colby in 2006 and is working for Amica Insurance in Boston, enjoying both the job and the city. Sam (Camp '95-'99) is a junior at the School of the Art Institute of Chicago, also enjoying himself thoroughly.

Nick Pratt (Camp '96-'98) is working for LandVest real-estate consulting in Boston. He is engaged to be married in August.

Charley Quarcoo (MCS 18, Advisor) is working as a law clerk in New York City. Later this year he will go to South Africa to research the synthesis of customary and formal law.

2000s

Warmest congratulations to **Christina Barrett** (EE Staff '00-'01), who married Todd Robida on September 15, 2007. They are hunting for a house in or near Wayland, MA.

After two years working for North Carolina Outward Bound, **Mary Beth Burch** (EE & Camp Staffs '03) has settled in Denver for a bit. "Working at an expeditionary learning school and playing in the mountains, missing the ocean."

Jason Chandler (Camp Staff '02-'03, '05) sent a long note from the Republic of Armenia where he is spending two years in the town of Martuni, "starting environmental clubs at the school and going to the forest with kids. My greatest goal at this point, with my limited language skills, is to clean up the trash around these recreational picnic sites and to give these children some sort of direct experience of nature. We're playing games, hiking, and having fun. I want to say how grateful I am to Chewonki for

all of your leadership and great programs—being and working there has been wonderful for me, and I especially realize it now." Jason invites anyone who is interested in viewing his blog to email him at chandler.jm@gmail.com.

Three cheers for camp assistant **Kate Fox**, who received an Honorable Mention for a Golden Lens Award at the American Camp Association's National Conference! The photo was of Chewonki campers running along the shore at Popham Beach. Kate's photos frequently appear in the *Chronicle*.

There's big "moos" from **Lola** (Farm Staff): she's expecting a baby calf! Lola is Chewonki's beloved cow who keeps our dining hall (and many staff families) supplied with fresh milk, cheese, and yogurt. She isn't being milked while she's pregnant, but once her calf arrives she'll be back in production.

Elizabeth Mehr (Camp '00) is a senior at Smith College and looks

forward to traveling to South America after graduation. "She carries the skills she learned on her Mariner trip wherever she goes," writes her father.

Daegan Miller (MCS history teacher '03-'06) is full of good news. "**Talia Epstein** [EE & Camp Staff '03-'06] and I are now, finally, both living together in a small Hoyt's-ish cabin right outside the city of Ithaca. We can hear coyotes at night, see the stars, and go for a polar bear dip in our pond. Not a bad set up. We also have a new addition to the family, a kitten named Rachel Catson (clever, eh?). Anyway, we miss you all and especially the fresh-pressed Chewonki cider. Hello to everyone."

Jean Wilkinson (Trustee) should be back on the tennis court by now, following surgery last fall to correct a pinched nerve in her arm. She reports that grandson Wills Bird is very excited about attending Camp Chewonki for the first time this summer.

IN MEMORIAM

John Chandler, Jr. (Camp '29-'33, former Trustee and Advisor), of Brunswick and Small Point, ME, died on December 25, 2007, at the age of 87, following many years with Alzheimer's disease. A graduate of Groton and Yale, he served in the U.S. Navy during World War II and then embarked on a lengthy career as an educator. He was an avid athlete and long-time skier, rower, and sailor. John was a valued and longstanding friend of Chewonki, serving as one of our earliest trustees, co-chair of the capital campaign in the early 1980s, and advisor. John was predeceased by his wife Fay. He is survived by five children, twelve grandchildren, and nine great-grandchildren.

Hasket Hildreth (Camp '71-'72) died at his home in Falmouth, ME, on February 27, 2008. Trained as an engineer, marine architect, and boatbuilder, Hasket was a great sailor and an enthusiastic supporter of sail training throughout his adult life. He is survived by his parents, three brothers, and two daughters.

We love hearing from you! A new form on our website makes it easier than ever. Visit the Keep in Touch page at www.chewonki.org/alumni to update your contact information and send us your news. Thanks, and we look forward to hearing from you.

The Chewonki Foundation

ANNUAL REPORT 2006-2007

Change is in the air at Chewonki, and it isn't just because one of the snowiest winters in years is *finally* giving way to spring! An exciting and much-anticipated era is about to begin: after years of planning, we will proudly open the doors this summer of Camp Chewonki for Girls. The camp is spectacularly situated on a beautiful lake in the North Woods, just south of our Big Eddy Campground, and promises to provide an unparalleled experience for girls ages 11 to 17. We will offer a one-week session for younger girls, ages 8 to 11, on Chewonki Neck in August. After 93 years of operating a residential camp for boys, we are thrilled to be balancing the gender equation for summer programs.

Closer to home, we've acquired the rights to use another new property: Squirrel Point Light and the 4.5 acres that surround it lie just 8 miles south of Chewonki Neck and will provide a much-needed new campsite for Chewonki trippers. This too is a gem of a spot, and we look forward to making good use of it as early as this summer.

There are also significant changes on campus, many of them in the form of construction. After watching in amazement last fall as the Barn slid 44 feet to the east without a hitch, we've marveled all winter as the Wallace Center has been transformed before our very eyes. In another month, we'll be eating in a fabulous new space that will be a showcase of energy efficiency and sustainability. (We may even be eating the first greens from Salt Marsh Farm by then!) The recent changes on the Lower Field aim to save water and energy on Chewonki Neck, and a new curriculum developed by the Sustainability Office aims to promote clean water *everywhere*.

As you'll see in these pages, we never lack for ideas at Chewonki. It is your support, however, that brings these ideas to life. Everything that's in these pages happens because of the generosity, creativity, and interests of our donors. The names that follow are far more than just lists to us; they carry stories, evoke warm memories, and remind us of gifts for which we are deeply grateful.

Thus summer we will hold a special celebration at Chewonki to mark the twentieth anniversary of the Maine Coast Semester. We do so knowing that MCS, and all of our other programs, would not be the same without all the wonderful people who make our work possible through donations large and small. We thank you one and all.

Lucy Hull
Director of Development

Can you find yourself in any of the photos that illustrate our Annual Report this year? If you're an MCS alum, you just might! The medley comprises photos from several semesters. Whether you find yourself or not, the activities pictured here should surely look familiar.

Gifts received between
September 1, 2006, and
August 31, 2007

UNRESTRICTED GIFTS

Anonymous (25)
Philip and Tucker Adams
Dr. Rozana Alam
Ms. Zarine Alam
Mr. Hans Albee
Ingrid and Mark Albee
Read and Jo Anne Albright
Jackie and Julius Alexander
John and Judith Alexander
John and Karen Alexander
Libby and Robert Alexander
Andrew Alexander-Ozinskas
Ms. Annika Alexander-Ozinskas
Mr. E. Davies Allan
Mr. Charles E. Allen
Mr. and Mrs. Douglas F. Allen
Mr. John L. Allen
Mr. Nick Allen
Mr. Matthew Altman
Jim and Kim Ambach
Ames Supply, Inc.
Ms. Karrie Amsler
Mr. Helfried W. Anderl
Ms. Claire Anderson
Mr. and Mrs. Richard B. Anderson
Ms. Kathleen Andre
Cindy and Kristy Andrews
The Nathalie and James Andrews
Foundation
Nick and Sarah Armentrout
Mrs. Margaret P. Arthur
John Atchley and Linda Sloane
Mrs. Elizabeth P. Atkins
Mr. Keith Ausbrook
Mr. David P. Ayars
The Ayco Charitable Foundation
Donald and Josephine Bail
Mr. and Mrs. Charles F. Baker III
Mr. Edward B. Baker and Dr. Anna
Van Heeckeren
Ellen and Jonathan Baldwin
Mr. James Balog
Ruth and Dana Bamford
Amy Barker and Misha Barker
Andy Barker and Ana Ruesink
Mr. Edward P. Barker
Ed and Sally Barker
Christopher and Molly Barnes
Howard J. Barnet Jr.
Sue and Kit Barrow
Gregory M. Barry and Donna L.
Sorkin
The Barths
Kerri and Richard Bartlett
Mr. and Mrs. David I. Barton
Jon and Abby Bates
Mrs. Robert C. Bates
Bath Sunrise Rotary Club
Nora Battelle, Burke Battelle, and
Monica Hirsch
Dale and Judy Bauer
Ellen K. Baum and Jeffrey Fischer
Ms. Lucy Baumrind
Mickey and Mary Ann Baumrind
Mr. and Mrs. Thomas P. Beal



Rick and Laura Beattie
Farmer Tom Beck
Judy and David Beebe
Scott and Laura Beebe
Donald and Virginia Belanger
Samuel Belk and Sherry Thornburg
Mr. Arthur Bell
Mr. Donald S. Bell
Susan Bell and Philip Hart
Warren and Susan Bell
Ben and Jerry's Foundation
Arnold and Nancy Bennett
Ms. Macky Bennett
Dr. and Mrs. Robert Berger
Judy and Ennius Bergsma
Mrs. Helene Berinsky
Rick and Carla Berry
Thomas and Cynthia Bertocci
Mr. Alfred B. Bigelow
Ann and Chester Billings Jr.
Ralph P. and Nell M. Black
Ms. Sheryl A. Blair
Mr. and Mrs. Richard A. Blake
Mr. and Mrs. Robert D. Blake
Mr. Richard F. Bland
Ms. Jane S. Block
Mr. and Mrs. Stephen H. Block
Peter H. and Sabina Blohm
The Blue Mountain Foundation
Dr. Elizabeth C. Bluhm
Mr. and Mrs. Peter D. Bluhm
Peter and Carol Blyberg
Mr. Elihu Bogan
Ms. Rosalind Bogan
Mr. Sean Bohac
Mr. Spencer Boice
Ms. Leigh C. Boisture
Billy and Ashley Bollwerk
Mr. and Mrs. Howard Bomstein
Mr. and Mrs. W. N. Booth
Neal and Winnie Borden
Boreal Design
Ms. Helen R. Bosley
Mr. Rufus Cole Botzow
Edward and Susan Bowditch
Maria and Penn Bowditch
Mr. William P. Bowditch
Mr. Jeffrey Boyink
Tom and Sandra Braden
Mr. Jamie Braman
Jonathan and Barbara Breen
Richard F. and Lynn M. Breen
Ms. Nancy P. Brennan
Peter G. and Candace E. Briggs
H. Day and Catherine V. Brigham
Mr. David W. Brown
Mr. Norman G. Brown
Rufus E. Brown and Thomasine
Burke

Richard Brunswick and Elizabeth
Betke
Samuel W. Bryant and Angela L.
Bryant
Mr. Thomas D. Bull
Mr. George H. Bunnell
Mr. John H. Burbank Jr.
Ms. Mary Beth Burch
Matt, Sarah, Judy, and Alan Burgess
Ms. Mathilde K. Burnett
Susan and Harold Burnett
Ms. Jean W. Burrage
Ms. Elizabeth P. Burroughs
Susan and Franklin Burroughs
Jeff and Allee Burt
Deborah and Jonathan Butler
Susie and Sted Buttrick
Elizabeth I. Byrne, Ed.D.
Robert and Emlen Cabot
Mr. and Mrs. Thomas D. Cabot Jr.
Becky Austin Cacioppi and Peter
Cacioppi
Tom Caldwell and Michelle
Robitaille
Mr. and Mrs. David H. Campbell
Ronald and Elizabeth Campbell
Carnegie Corporation of New York
Mr. and Mrs. Samuel B. Carr
Carrabasset Coffee
Ernest and Jane Carroll
Mrs. Margaret S. Carter
Ted and Liz Carter
Albert, Stephanie, and Gregg
Carville
Mr. and Mrs. Laurence Casper
Ms. Nicole Casper
Mr. Adan Celis Gonzalez and Ms.
Gloria Madrid
Mr. and Mrs. Thomas Chadwick
Chalmers Insurance Agency
Chip and Nancy Chandler
Stephen Chang and Susan Opotow
Bart Chapin III and Lucy W. Hull
Mrs. Melville Chapin
Tom and Kate Chappell
Mr. Dick Chase
Alan Chebuske and Melissa Hewey
Chewonki Campground
Cynthia and H. Martin Chomiak
Mr. Josh Chou
Ms. Annie Chow
Ron and Kristine Christensen
Dr. Michael G. Ciborski
Ms. L. Citizen
Sue and Dave Clark
Mr. William C. Claus
Ms. Mary L. Cleverdon
Ms. Courtney E. Clinkscales
Ms. Jan Coates

The Coca-Cola Company
Tomlin Coggeshall and Christopher
Rice
Ruth Cohen, MD, Leonard Hindell,
and Ben Hindell
Mrs. Constance Cohn
David Colbert and Ellen Moon
Colby and Gale, Inc.
The Helen W. Coleman Trust
Mr. and Mrs. Samuel R. Coleman
Mr. Peter L. Collins
Mr. and Mrs. Douglass M.
Compton Jr.
Michael Connolly and Jamie Stern
Ms. Betta Stothart Connor
Mr. and Mrs. John N. Conyngham
III
Art and Cici Cook
Mr. Winsor R. Copeland
Mr. Bruce Cornuelle
Mrs. Jean F. Cornuelle
Ms. Regina F. Coronata
Ms. Emma Cott
Lee and Anne Cotton
Ms. Sheila M. Coy
Mr. and Mrs. Bigelow Crocker
Caroline and Todd Crocker
Geoffrey Cronin and Anne Fischer
Ms. Jenn Cross
Mrs. Norman C. Cross
Helen and David Crowell Fund
of the Community Foundation of
New Jersey
James and Deborah Crowell
Mr. Paul Crowell
Tim Crowell and Pat Sabalis
Mrs. Patricia A. Crowley
Andy and Mary Cutler
Melvin S. Cutler Charitable
Foundation
Ms. Martha D'Agata
The Dahmert Family
Mr. Tony Dall
William J. Dana and Emily L.
Boochever
V. Alexandra Darrow and Jerome
D. Griffin
Mr. and Mrs. Peter M. Davidson
Mr. Paul L. M. Davis
Kate, Adam, and Nolan Day
Mrs. Dianne S. DeCoff
Ms. Lile H. Deinard
Ms. Daria de Koning
Mr. and Mrs. Joep de Koning
Jeremy and Sherrie Delinsky
Charles and Margaret Demeré
Mr. Edward DesMaisons
Mr. and Mrs. Kinsley V. R. Dey
Mr. Charles W. H. Dodge

Mr. Laurence P. Dodge
Ms. Diane H. Dodson
John and Joal Donovan
Elisa and Tom Dooley Family
Cathy and Matthew Douglas
Bob and Nancy Downey
Tom and Margaret Downing
Christopher and Tiffany Drake
Mr. David Drinkwater
Mr. and Mrs. Edward M. Duane
Mrs. James C. Dudley
Mr. Jesse P. Dukes
Mr. Christopher Dumaine
Ms. Joanna W. Dumdey
Dr. Paul H. Dumdey
Mr. Andrew Dumsch
Mr. Chip Dunn
Mr. Jeremy C. Dunton
Mr. Peter S. Eastman
Mark Eaton and Brooksie Koopman
of the Maple Tree Fund
Mr. and Mrs. Jeffrey L. Eberle
Mr. Mike Eckel
Kirstin and William Edelglass
Jon Edwards and Nancy Fox
Dr. and Mrs. Michael Egan
Mrs. Diane F. Eisenstat
Susan and Linc Eldredge
Bob and Bee Elmore
Roger and Patty Emerson
Ms. Shelley Emmer
Ms. Talia Epstein
Dr. Francisco J. de Echegaray Espada
Ms. Lara Ettenson
Rev. and Mrs. John D. Eusden
Dr. and Mrs. Frederic A. Eustis II
Jeff Evans and Courtney Jones
John and Carolyn Evans
Mark Evans and Barbara Mensch
Richard and Kay Evans
William and Lucretia Evans
Ms. Louise P. Ewing
Mrs. Susanne B. Ewing
Randy Ezratty and JoAnn Corkran
John and Susan Faigle
Mr. John N. Faigle Jr.
Mrs. Judith R. Falk
Mr. and Mrs. Roy Farmer
Mr. and Mrs. Francis H. Farnum
Peter Farnum and Courtney Seymour
Peter Farnum and Janet Tunis
Robert and Nancy Farnum
Colin Fay and Stephanie Holmes
Averil and Rol Fessenden
Mr. and Mrs. Richard D. Field
Andrew and Elda Fisher
Jody and Alan Fitts
Dr. Mary Flavan
Terry Flenniken and Mary Hennessy

DONORS TO THE 2006–2007 ANNUAL APPEAL

- Mr. Jerome H. Fletcher
Mr. and Mrs. Charles P. Floe
M. Burch Tracy Ford and Brian Ford
Northrup and Carole Fowler
Richard Frantz and Jennifer Fox
Mr. Stephen A. French
Mr. David A. Frothingham
Ms. Lisa Frothingham
John and Carol Gadsby
Chris and Lacey Gale
Ms. Jane G. Gallaudet
Ellen and Larry Garber
Gardiner Savings Institution
Frank Garretson and Helen Bray-Garretson
William H. G. and Sarah Gatchell
Capt. and Mrs. William G. Gatchell
General Electric Foundation
Helen, Larry, and Laurance George
Art and Grace Gershkoff
Mr. Bill Gibson
Mr. Chandler Gifford Jr.
Susan and John Gillespie
Jim and Susan Gillies
Harry L. Gladding Foundation
Mr. Wendell H. Goddard
Ms. Selmah Goldberg
K. C. Golden and Kristi Skanderup
Mr. Andrew Goodband
Ms. Caroline Goodbody
Thomas and Sandra Goodbody
Ms. Ella M. Goodbrod
Mr. Frederic Gooding Jr.
Clark and Gail Goodwin
Ms. Emily Goodwin
Jeffrey and Vivian Gordon
Mr. and Mrs. Charles B. Gordy II
The B. H. Gottesman Family Foundation
Ms. Nora Gouge
Rudolf and Dorothy Graf
Mark and Rebecca Graham
Mr. John Lawrence Grammer
Ms. Kerry Quinn Granfield
Mr. John B. Grant
Mr. and Mrs. Kenneth L. Grant
Mr. and Mrs. Jesse Grantham
Sam and Gerry Gray
Meredith Green and Alexandra Bryce Koukopoulos
Mr. Stuart H. Green
Mr. Theodore S. Greene
Mr. A. C. Greer
Gordon and Anne Grimes
Heather and Kevin Grogan
David and Joan Grubin
Ms. Lizzy Grubin
Jenn and Jay A. Gudebski
Paul and Elaine Gustafson
John and Betty Hadden
Mr. James D. Hadley
Cyrus and Patricia Hagge
Bill and Sally Haggett
Eric and Sandi Hakanson
Douglas and Linda Haley
Susan Halio and Phoebe Loris
Gordon and Linda Hall
Mr. and Mrs. Gordon Hall III
Mr. Samuel G. Hallet
Ed and Barbara Hamilton
- Mr. Charles J. Hamm
Mr. Scott M. Hand
Mr. Richard Handford
Mrs. Geraldine B. Hanlon
Moritz Hansen and Suzanne Fox
Dexter Harding and Lucy Gatchell
Mr. and Mrs. Douglas Hardy
Ms. Elizabeth Harmon
Suzanne and Richard Harrington
Mr. and Mrs. Peter W. Harris
Jeff and Debbie Harrison
Mr. and Mrs. Charles C. Harwood Jr.
Rob and Melanie Harwood
Ms. Susan H. Haskell
Elizabeth and Whitney Hatch
Mrs. Judith E. Hazen
Casey Heard and Casey Leonard
Ms. Brannon Heath
Mr. Ted Heavenrich
Caleb and Rebecca Hemphill
Kay Henry and Rob Center
Roy Henwood and Nancy Kuhn
Bill Hetzel and Jennifer Niese
George and Marilyn Hetzel
Mr. William B. Hetzel Jr.
Mr. and Mrs. Nicholas P. Heymann
Mrs. Jane Heyward
Tom Higley and Nanette Beall
Mr. and Mrs. Charles L. Hildreth
Ms. M. K. Hill
Mr. James G. Hinkle
Don and Barbara Hodges
Ms. Nancy A. Hodges
Mr. William V. Hodges III, Mr. William V. Hodges IV, and Ms. Kathryn V. Hodges
Mr. and Mrs. Robert L. Hoguet III
Mr. and Mrs. Ronald Holland
Ken and Hilary Holm
John and Mildred Holmes Family Foundation
Mr. Edward Hoopes
Harry and Virginia Hopcroft
Ms. Alix W. Hopkins
Mr. and Mrs. DeWitt Hornor
Mr. Gurdon W. Hornor
Mr. Robert G. Houston
The Hoyle Family
J. M. Huber Corporation
Mr. Samuel G. Huber
Dan Hudnut and Lynn Sheldon
Don Hudson and Phine Ewing
Neil and Martha Hulbert
Charles and Louise Huntington
Mr. J. Britton Hutchins
Stephen W. and Caroline C. Hyde
The Hyson Family
IBM Corporation
Mrs. Clare S. Ingersoll
Mr. and Mrs. Robert H. Ingersoll
Mr. Timothy A. Ingraham
Mr. Pieter K. Ingram
Preston and Gretel Irving
Ms. Emily A. Izenstein
Paula and Barry Izenstein
Mr. Richard M. Jackson
Mr. Sam Jackson
Mr. William M. Jackson
Mr. and Mrs. Roger B. Jacobs
- Truxton S. Jayne and Christina Williams
Rosemary and Michael Jeans
Steve and Debby Jencks
Ms. Sarah Jensen
Mr. Otis M. Jernigan
Brad Johnson and Emily Levan
Mr. David Johnson
Leslie E. Johnson and John E. Tobiason
Paul and Mary Johnson
Mr. and Mrs. Woodward Johnson
Mr. and Mrs. William C. Jolly
Mr. and Mrs. Richard W. Jones
Wilson and Sally Jones
Ms. Wendy E. Jordan
Ms. Julia Judson-Rea
Mr. Philip T. Jurgeleit
Just Framing, Inc.
Deborah and Robert Kanter
Jeffrey H. Kapell and Alexandra Pollard-Kapell
Donald and Edna Kaplan
David Kapp and Cecily Kahn-Kapp
David and Rita Karp
Mr. and Mrs. David B. Karrick Jr.
Chris and Lee Kauders
Mr. Frederick Kauders
Ms. Kathryn E. Keating
The Keewaydin Fund at the Boston Foundation
Ms. Janet E. Kehl
Eugene Keilin and Joanne Witty
C. David Keith and Stephen B. Simpson
Mr. Peter C. Keiser
Ken and Martha Keller
Scott Keller and Laurie Johnson
Amrit and Gary Kendrick
Richard C. and Anne S. Kennedy
Mr. Peter A. Kent
James and Mary Emily Kerney
Mrs. Edith M. Kerrigan
Mr. and Mrs. Bruce G. Kidder
Joan E. Kieran and Thomas R. Kieran
Mitch Kihn and Barrie Brusila
Paul and Patricia Killigrew
George and Meg Kimball
Erik and Anne Kindblom
Christine and Winston Kipp
Ms. Loryn Kipp
Ms. Janice Kirby
Ms. Gabrielle Kissinger
Chris and Sue Klem
Mike and Claudius Klimt
Mr. Marcus R. Knowlton
Mr. Brendan Kober
Ms. Enyi-Abal Koene
Jacqueline and Jane Koopman
Todd and Rebecca Kosakowski
Ronald Kreisman and Roberta De Araujo
Dr. Carl Kuehn and Dr. Wendy Gamble
Brandon and Jackie Kulik
John Kurtz and Ellen Manobla
Mr. James Labbe
Esu and Dan Lackey
Ms. Blair Lamb
- Jonathan Lamb and Toni Scherrer
Don and Dottie Lamson
LandAmerica Foundation
Mr. and Mrs. Edward J. Landrigan
Lane Construction Corporation
Mr. Gerrit Lansing
Shappy and Garth LaPointe
Ms. M. J. Larned
Ms. Elizabeth L. Lathrop
Rufino and Ana Lauria
Dick Lavine and Chula Sims
Gus Lawlor and Suzanne Coates
Jim Lawrence and Penny Robbins
Dr. and Mrs. Thomas Leavitt
Lehman Brothers
Carl and Sandra Lehner
Emily and Arthur Lerner
Mrs. Joan W. Leslie
Seaver and Anne Leslie
Alan and Jan Letourneau
Ms. Kate Letourneau
Mr. and Mrs. Richard Levengood
Sara and Shai Levite
Ms. Sally M. Lewis
Steve, Lynn, and Robin Lewis
Col. and Mrs. Seymour Liebmann
Ms. Anne Lightbody
Ms. Kali Lightfoot
Ms. Jill Dyane Lingenfelter
Robert and Barbara Liotta
Mr. Benjamin C. Lipman
Mr. Harvey A. Lipman
Joel Lipsitch and Abbie Melnick
Susan and Ian Lipsitch
Mr. and Mrs. James G. Lister
Mr. Timothy F. Little
Mr. and Mrs. Warren M. Little
Mrs. Cynthia B. Lloyd
Ms. Lauren Lochner
Phil and Sally Lochner
Lee and Peter Lockwood
Ms. Abagael Long
Mrs. George M. Lovejoy Jr.
Henry and Lisa Lovejoy
Ms. Wendy Lovinger
Sarah W. Low and Michael Cyrulnik
Ms. Christy A. Lowe
Mr. Charles Lowrey and Ms. Susan Rodriguez
Michael Lustick and Barbara Rickler
Mr. Robert C. Lyman
Richard and Margaret Lytton
Mrs. Carol A. Main
The Majorhart Family
Fred and Louise Makrauer
Ms. Elizabeth Malone
Tom and Susan Mann
Claire D. and John R. Mannheim
Susan L. Mansfield and Cantwell Clark V
Ann and Jack Maraffi
The Marshall Family
Erik and Valeska Martin
Joshua D. and Rebecca E. Marvil
Rebecca Marvil and Brian Smyth
Ms. Margaret Mathis
Ms. Tina A. Mattingly
Marcy and Jeff Maxwell
James H. and Kathe Mayer



Mr. Bill Mayher
Mr. David G. McBane
Mr. Bailey McCallum
Mr. Grant McCargo
J. S. McCarthy Company, Inc.
The McClean Family
Mrs. Constance R. McClellan
Ms. Mimi McConnell
Joyce and Hugh McCormick
Ms. Pat McDonagh
Nancy and Derek McDonald
Katrin McDelderry and David
Curson
Mr. and Mrs. Bernard McElhone
Mr. Patrick D. McElhone
Mr. John S. McFarlane
Edward McGee and Donna
Browning
Kate and Jordan McGowan
The McGraw-Hill Companies
Marie and Robert McInnes
Jim and Jane McIntyre
Jon and Sherrie McKenna
Mr. Thomas McKeon
Mr. Peter G. McKinney
Kristen, Nancy, and Ernie McLean
Judith and Ted McMillan
Ms. Torrey McMillan
Dr. and Mrs. John McWhorter
John and Karen Medford
David and Jennifer Mehr
Steven and Antonia Melamed
Missy and John Melbostad
Rick and Bunny Melvoin
Daniel Menaker and Katherine
Bouton
Beth and Jeffrey Mendel
Annie C. Merrill and Howard R.
Whitcomb
Mr. Loren Merrill
Merrill Lynch
Pam and Rich Merriman
William and Rita Messing
Mid-Coast Energy Systems, Inc.
Mr. Al Miller
Mark Miller and Bonnie Rukin
Miller
Mrs. Stanley R. Miller
Stanley R. Miller Foundation
Ms. Katharine Millonzi
Ms. Anne Milne
Kevin, Mary, and Alexa Milroy
Ms. Molly Mithoefer
Pam, Mike, and James Monaco
Risa and Richard Moon
Mrs. Francine Z. Moore
Gordon and Betty Moore
Foundation
Mr. and Mrs. Jeffrey L. Morby
Willard Morgan and Jennifer Barton

Daniel and Polly Morgenstern
Mr. and Mrs. Peter S. Morosoff
Ms. Amy T. Morris
David Morrison and Mary Fleming
Mr. and Mrs. Duryea Morton
Warren Motley and Cynthia
Saltzman
Rachel and George Mullen
Mr. Martin J. Mullin
Ms. Nina M. Murray
Mr. Arthur R. Myer
Theodore H. and Mary Eugenia
Myer
Ms. Elizabeth Mygatt
Susan and Sam Mygatt
David Nachman and Amy Schulman
William Nathan and Susan P. Ross
Mr. and Mrs. Frank Naughton
Chris and Ruth Neagle
Lynn and Trudy Nelson
The New York Times Company
Foundation
Chris and Andrea Nielsen
Bronda and Al Niese
Kirk Niese and Michaela Goldfine
Barry and Ellen Nigrosh
Nintendo of America, Inc.
Ms. Julie A. Nisbet
Peter and Kristin Nordblom
Ms. Allison Norman
Christiane Northrup, M.D.
Charles and Karin Noyes
Mrs. Elisabeth H. Null
Geoff and Clare Nunes
Geoffrey Nunes Jr. and Barbara
Lemmen
Mr. Jake Nunes
Mr. J. Christopher Oates
Dave and Patsy O'Brien
Mr. Yuki R. O'Brien
Mr. Yusuke O'Brien
Chelsie and Sandy Olney
Mr. Robert Olney
Kevin R. O'Neill and Terri L.
McBride
Patrick and Sandra O'Neill
Richard and Judy Opsahl
William and Julie Orton
Mr. and Mrs. Eugene J. O'Sullivan
Ms. Shea O'Sullivan
Mr. David Panich
Mrs. Lea R. Parson
Ms. Michele Party
Mr. Robert W. Patterson Jr.
Nat Paynter and Teal Krech Paynter
Ms. Mary Ellen Pearce
Dr. and Mrs. David Pearsall
Dr. and Mrs. Kenneth Peele
Jim and Sara Pelgrift
Janet Pence and Brian Kent

Penobscot Windjammer Company/
Schooner Mary Day
Mark Penzel and Cathy Corman
The Perkins Family
Mr. and Mrs. Adriano Pescetto
Alex and Helen Phillips
Mrs. Allon H. Pierce
Ms. Juni Pierce
Ms. Carrie B. Pierson
Elizabeth and Jan Pierson
Mr. Malin L. Pinsky
Dick Plumb and Nancy Porter
Jane and Nathan Podkaminer
C. Powers and Harriet Taylor
David and Lise Pratt
Mr. and Mrs. Harold I. Pratt
Sudi and Fred Press
Alex and Lili Pugh
Ms. Amy Purdie
Mr. Jeffrey L. Purvin
Drs. Stephen Quarcoo and Reneida
Reyes
Mr. Joseph Quinton
Mrs. Mary L. Quinton
Beth and Fred Quivey
Clyde Randall and Leslie Perry
Joan and Fitzhugh Read
Gerardo Redondo and Paz Barroso
Jay and Amy Regan
Mrs. Constance V. Reich
Jesse and Alene Reich
Mr. Steven D. Reich
Ms. Maja Reinhartsen
Mr. Jonathan Reitman
Helen Haskell Remien and Cam
Remien
Mr. Peter G. Restler
David and Krista Reynolds
Mrs. Sarah B. Rheault
Wilfred Richard and Lindsay Dorney
Zoe Richards and Josh Brown
Mr. and Mrs. Frederick C.
Richardson
Dr. and Mrs. John R. Richardson Jr.
Mr. Kim Richman
Mr. Kenneth W. Riley
Mrs. Andrew E. Ritchie
Ken and Susan Ritzenberg
Ms. Jessica Rivera
John and Shaye Robbins
Mr. and Mrs. Joseph C. Robbins
Mr. Emerson Roberts
Peter and Diana Robertson
Ms. Christina Barrett Robida
Mr. Stephen B. Rodman
Carmen and Carlos Rodriguez
Rogers Ace Hardware
Ms. Amy Rogers
Mr. and Mrs. John C. Rogers
Helen and Warren Roos

Sandra and Ed Ross
Mrs. James A. Ross Jr.
Mr. Hunter Rowley
Mark and Anne Rowley
Ms. Leslie Rowson
Leo Pierre Roy and Perry Russell
The Rubens Family
Mrs. Paula Rubenstein
Mr. and Mrs. Morgan Russell
Peter and Tracy Russell
Tim Rutkowski and Terri Yeager
Mr. and Mrs. Ethan Ryman
Louis E. and Honor Fox Sage
Hal and Katharine Sakenfeld
Cotty and Susan Saltonstall
Mr. Henry M. Sanders
Ms. Ann Sawyer
Ms. Margaret Sayvetz
Mrs. Shirley W. Scaife
Mr. Will Scarlett
Mr. Jonathan F. Schachter
Ms. Stephanie T. Schley
Tim and Joyce Schmitt
Ms. Caroline Schopp
Mr. and Mrs. Kenneth C. Schopp
Ms. Elizabeth A. Schulte
Mr. Jeff Schwartz
Ms. Priscilla J. Schwartz
The Schwarz and Jelin Family
Rupert Scofield and Lorraine O'Hara
Ms. Carter P. Scott
Mr. Joseph R. Scott Jr.
Peter and Mary Scott
Mr. and Mrs. Whitney L. Scott
Mrs. Leslie B. Seagrave
Ms. Sarah Seaward
Ms. Helen K. Selle
Joseph and Caitlin Selle
George and Sue Sergeant
Virginia M. and Edward M. Sermier
Dr. Joanne Sharpe
Prof. Joseph Shaw
Katerina and Robert Shaw
Mr. Patrick Shaw
David and Susie Shelton
Allen and Sarah Shifflet
Dr. and Mrs. Dennis L. Shubert
Ms. E. Carolyn Shubert
Greg Shute and Lynne Flaccus
Bill and Fay Shutzer
Sam and Tom Shwartz
Mr. and Mrs. Jeremy Siegel
Marvin and Nancy Siegel
Mr. and Mrs. John Siegenthaler
Mr. Michael V. Silberman
David J. Silverberg, Ronne Hoffman,
and Ms. Laura Silverberg
Howard and Patricia Silverstein
Mr. Rutledge A. Simmons
Emily and Chris Simons

DONORS TO THE 2006–2007 ANNUAL APPEAL

Ms. Sarah Sincerbeaux
 Ms. Allison Skartvedt
 Ms. Barbara L. Sloss
 David and Caroline Smith
 Ms. Diane Smith
 Mr. Hayden P. Smith
 Ms. Mary Minor C. Smith
 Otey Smith and Nancy Egan
 Mr. Randall Smith
 Deb Snite and Richard Steele
 Mr. Henry H. Snow
 Ronald and Sharon Snow
 Mr. Alexander J. Sonneborn
 James and Marcene Sonneborn
 Lori and Brian Sorrick
 Soule, Soule & Logan
 Lynn and Mike Spadinger
 Scott Spencer and Mary Cook
 Betsy and Gary Spiess
 Mr. and Mrs. Lionel B. Spiro
 Ms. Rebecca A. Spiro
 David and Janis Spivack
 Mr. and Mrs. Walter F. Stafford
 Ms. Laura E. Stamas
 Mrs. Judith M. Stames-Hamilton
 Susan Stanger and Mitchell Nemeth
 Ms. Tobie Stanger
 Ms. Rebecca Stanley
 Ms. Amanda Stason
 John and Melissa Steines
 Mr. Matt Stewart
 Mr. and Mrs. Robert M. Stewart
 Mr. and Mrs. Leslie M. St. George
 Mr. and Mrs. William S. Stiles
 Judy Stone and Randall Downer
 Ms. Roberta Bates Stothart
 Gene Strassburger and Phyllis Kaitzerow
 Frank and Nancy Strout
 Ms. Caren V. Sturges
 Ms. Louise Sturges
 Albert and Lee Sturtevant
 Sheila Sullivan and Cory Snow
 Ellie and John Svenson
 Stephen and Teri Swanson
 Ken and Mary Lou Swasey
 Charles Sweet and Ronnie Fischer
 Mr. David W. Swetland
 Sears Swetland Family Foundation
 Mr. David P. Tapscott
 Mr. Jeffrey H. Tarbox
 Ms. Patricia Simonds Taylor
 David, Danny, and Jane Teaze
 Kathy and Ed Thompson
 Ms. Sarah E. Thompson
 Ms. Claire Z. Thorp
 Ms. Kate Thurman
 Ms. Leah Titcomb
 Barclay and Lucy Tittmann
 Dr. Robert K. Tittmann
 Tom's of Maine
 The Tooker Family
 Towers Perrin
 The Elinor Daniels Washburn
 Charitable Gift Fund, at the
 recommendation of
 Ms. Elisabeth S. Treadwell
 Mr. and Mrs. James T. B. Tripp
 Ms. Debora W. Tuck
 Ms. Liz Tunick

Mr. Zeke N. Turner
 Mr. Roger B. Tyler
 Mr. and Mrs. William B. Tyler
 Ms. Dixie Uffelman
 Unitarian Universalist Church of
 Brunswick
 June and David Vail
 Dan and Sally Vallimaescu
 Mr. Josh Van Buskirk
 Ms. Mary C. Van Buskirk
 Mark Vandersall and Laura
 Mendelson
 Vaughan Homestead Foundation
 Mr. Robert Van Vranken Jr.
 Dr. and Mrs. Eduardo D. Vazquez
 Ms. Veronica Vazquez
 Dr. Richard R. Veit
 Mr. David M. Wade
 William and Heidi Wailand
 Helen and Mo Waite
 Mr. and Mrs. D. A. Walden
 Mrs. Arleon S. Waldron
 Mr. Philip Wales
 Ms. Bibba Walke
 Ms. Mary Jane Wallace
 Dr. David Walzer and Dr. Julia Uffner
 Ms. Emily S. Warner
 Stephen A. Warnke and Susan L.
 Sommer
 Reina and Will Warren
 Jay, Sam, and Max Wechsler
 James, Anne, and Jed Weeks
 Julia and Sinclair Weeks
 Tina and Wayne Weeks
 Mr. and Mrs. William D. Weeks
 Len Weiner and Kathy Kelly
 Mr. Stephen M. Weld
 Ms. Laura K. Welles
 Mrs. Anne W. Wells
 Ms. Barbara F. Wells
 Jim and Gail Werrbach
 Mr. Bob Wheeler
 Ted and Betsy Wheeler
 Margery and Michael Whiteman
 Stephen Whiteman and Tanya Rose
 Richard and Jennifer Whiting
 Mr. and Mrs. Johnston D. Whitman
 Mr. Robert Whitman
 Mr. Frank C. Whittelsey
 Mr. Bert R. Whittemore
 Mrs. Beth Wiggins
 Dr. and Mrs. L. Douglas Wilkerson
 O. A. and M. P. Wilkerson
 Ms. Jean T. Wilkinson
 Kate C. Wilkinson and Peter W.
 Stoops
 Beth and John Willhoite
 Nate and Susan Williams
 Mrs. Sally B. Williams
 Ms. Sarah F. Williams
 David and Susan Willis
 Mr. John C. Willis
 Mrs. Jean W. Wilson
 Mr. John P. Wilson
 Mrs. Marcia E. Wilson
 Ms. Zinnia Wilson
 Kal Winer and Linda Tatelbaum
 Mr. Noah T. Winer
 Dr. David B. Wingate
 Ted Winterer and Beck Taylor

Wiscasset Ford, Inc.
 Mr. Ken Wise
 Mr. and Mrs. Alan W. Wolff
 Ms. Damaris Wollenburg
 George and Chandler Woodland
 Dian Woodner and Cerrie Bamford
 Stu and Rachelle Work
 Charles and Cynthia Wright
 Mr. Jestin J. Wyman
 Frank and Emily Yazwinski
 Ms. Jennifer Yee
 Ms. Susan Young
 Mr. John G. Youngman
 Mr. Robert P. Youngman
 Kate Ziminsky and Paul Field
 Mrs. Susan Zysk

In Memory of Raymond H. Carter
 Mrs. A. Dix Leeson

In Memory of Josephine Claghorn
 Ms. Melly Flynn
 Ms. Anne C. Moore
 Judith and Robert Sherman

In Honor of Harry Greene
 Matt Durkin and Janet Seaward

In Memory of Benjamin Hall
 Mr. and Mrs. Edwin K. Hall
 Ms. Frannie Hall

**In Honor of Holt Hogan and Will
 Heinitch**
 Ms. Monte N. Parsons

In Memory of Sarah Hull
 Mr. and Mrs. Frederick H. Scott

In Honor of Hannah Kappell
 Mrs. Martha Stearns

In Memory of Jimmy Klein
 Anonymous

In Memory of Julia Minard
 Elizabeth Bailey and Sara Minard

**In Honor of Jeff Newsom and
 Susanne Taylor**
 Kathryn E. Gardner and Michael
 Newsom

In Honor of James Olivetti
 Ms. Mary Jane Wallace

In Memory of George Pierce
 Mrs. Allon H. Pierce

In Honor of Erin and Kerry Quinn
 Donna and Kieran Quinn

**In Honor of Greg Shute and
 Madeline Bachner**
 James and Deborah Crowell

In Honor of Emma Snellings
 Ms. Lisa Myers

**In Honor of Deborah Snite and
 Richard Steele**
 The Mersereau Family

**In Honor of Marika and Sasha
 Shyduroff**
 Mr. and Mrs. Richard L. Gardner

**In Honor of Christopher Thompson's
 Wedding**
 Ms. Elinor Gregory

In Memory of Andrew West
 David and Martha West

Gifts of Goods and Services
 Ms. Lindsay Allen
 Mrs. Margaret P. Arthur
 B & C Custom Sawing
 Judy and Ennius Bergsma
 Dr. John Bockstoe
 Greg and Emilia Bostater
 Bart Chapin III and Lucy W. Hull
 Ms. Isabelle de Trabuc
 Mr. and Mrs. Jeffrey L. Eberle
 Ms. Kate Fox
 Mr. Lee A. Huston
 Mr. Brendan Kober
 Mr. Aaron Ritzenberg
 Jay and Lisa Stanbury
 The Sun Pipe Company
 Dick Thomas and Karen Dilley
 Ms. Lanna Walsh
 Mrs. Athena Warren
 Yale Cordage, Inc.

In Honor of Lucy Izard
 Mr. and Mrs. John Izard

RESTRICTED GIFTS FOR SPECIFIC PURPOSES

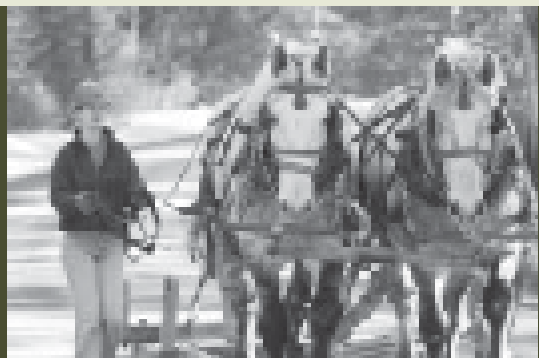
FOR THE BACK RIVER TRAIL
 Ms. Karen Woodard

THE BINOCULAR FUND
 Anonymous

IN SUPPORT OF CAMP
 Jeff and Peter Bates
 Mr. Adam Berinsky
 Samuel and Carolin Buttrick
 Mr. Charles H. Hood
 Mr. Alexander Knecht
 The McGraw-Hill Companies
 Stephen and Elizabeth Rintoul
 W. Clement and Jessie V. Stone
 Foundation

In Honor of Garth Altenburg
 Ms. Maura K. Dudley
 Rhonda Kirschner and Ellis B. Levine

**FOR THE CANOE EXPEDITION FOR
 MAINE GIRLS**
 Mr. E. Davies Allan
 Elise S. Brown and Martha E.
 Piscuskas



Ms. Carol L. Carriuolo
Ms. Paula Craighead
Ms. Anne Dellenbaugh
The Leonard C. and Mildred F.
Ferguson Foundation
Kai and Mac George
Ms. Marilyn George
Mrs. Jenn Gudebski
A Component Fund of the Maine
Community Foundation, at the
recommendation of Lynn
Harrison
Ken and Hilary Holm
Sam and Patricia Horine
The Horizon Foundation
Stephen W. Hyde and Caroline C.
Hyde
Dr. Julia G. Kahrl
Ms. Janice Kirby
Ms. Kali Lightfoot
Agnes M. Lindsay Trust
Michael and Deborah McGann
Mr. Patrick Mehr
Annie C. Merrill and Howard R.
Whitcomb
Sara Kirby Mitchell and John
Mitchell
Lida R. and Carl A. Pinkham
Shirley Rush and Andrew J. Mabry
Ms. Lotte M. Schlegel
Mr. Nat Shed
Ms. Carol S. Sudduth
The Elinor Daniels Washburn
Charitable Gift Fund, at the
recommendation of
Ms. Elisabeth S. Treadwell
Ms. Grace von Tobel
Nancy Wanderer and Susan Sanders
Ms. Anja Whittington
Kate C. Wilkinson and Peter W.
Stoops
Mr. Ellis Wisner
Stephen and Bonnie S. Wood

IN SUPPORT OF THE CENTER FOR ENVIRONMENTAL EDUCATION

Dot and Don Lamson
Neil and Suzanne McGinn
Ms. Margaret J. Stiassni-Sieracki
The Writing Company

FOR THE CHEWONKI RENEWABLE HYDROGEN PROJECT

Dr. Francisco J. de Echegaray
Espada
Mr. Paul Faulstich
Mr. and Mrs. L. John Meyers
Mid-Coast Energy Systems, Inc.
Carol and Kathy White

In Honor of Paul Faulstich Dr. Elinor F. Downs

FOR GORDY HALL CABIN Mr. and Mrs. Gordon Hall III

FOR THE GRAND CHAT Mr. and Mrs. Robert H. Ingersoll Northwest Point

IN SUPPORT OF THE MAINE COAST SEMESTER

Bank of America
Ms. Leigh Boisture
Mr. Crawford Byers
Jessica Montgomery Green and
Greg Green
Ms. Jessica S. Hoy
Mr. Rand Knight
Mr. David W. Liebmann
Alyssa Pei and Neal Sondheimer
William and Jennifer Ruhl
The Rust Foundation
Jonathan H. Sprogell and M. K.
Taylor
Mr. and Mrs. John C. Warren
Mr. Kristian Whitsett
Nathan and Barbara F. Willensky

IN SUPPORT OF OUTREACH Anonymous Bath Savings Institution Mark and Rebecca Graham Neil and Suzanne McGinn Mr. and Mrs. Stanley H. Whicher Ms. Kathy Wood

FOR PATHWAYS TO A SUSTAINABLE FUTURE Anonymous (2) The Virginia Wellington Cabot Foundation Mr. Richard F. Goldhammer Mr. Gregory Greenman Michael and MaryEl Kober Neil and Suzanne McGinn Ms. Ann Norris Sheepscot River Inn & Bintliff's Ocean Grill Mr. and Mrs. Gary C. Spurgat U.S. Gulf of Maine Association Mr. William Willis

In Honor of Beth Nagusky Ellen K. Baum and Jeffrey Fischer

IN SUPPORT OF WILDERNESS TRIPS The Virginia Wellington Cabot Foundation

In Honor of Lauren Ostis and Colin McGovern Matt Durkin and Janet Seaward

GIFTS RESTRICTED TO ENDOWMENT

CLARENCE E. AND KATHERINE B. ALLEN CAMP SCHOLARSHIP FUND

Anonymous (8)
Ms. Lindsay Allen
Michael Brody and Laura Mentch
Ms. Melissa A. Heath
Mark Lickus and Stephanie Miskell
Mr. Jack Myer
The Redmond Family Foundation
Elinor and Dan Redmond
George V. Santoni and Mary Beth
Winn
Bailey Whiteman and Doug Belling

In Honor of Elsa Olivetti Ms. Sheryl A. Blair

THE BEEBE FUND Scott and Laura Beebe

SHERYL A. BLAIR FUND Anonymous Friends of Sheryl Blair Patricia and Peter Bagg Ms. Sheryl A. Blair Nicole and David Borden Angela and Will Braman Ann and Richard Burnham Ms. Marion B. Case Bart Chapin III and Lucy Hull Concord Players David Dollenmayer and Linda Pape Mr. Joseph Donnelly Ms. Eleanor I. Druckman Mr. Jesse P. Dukes Ms. Peggy P. Elliott Tim and Margaret Ellis Ms. Jillian Hensley Patrick M. Herron and Martha G. Locke Sharon, Jim, and Liam Jackson Mr. Frederick Kauders Corinne and Arty Kinsman Ms. Elizabeth T. Knake Mr. and Mrs. John K. Kramer Mr. Donald C. Main Ms. Marlene Mandel Ms. Maureen Waters Mara Ms. Margaret E. McNamara Ms. Cristin D. Merck Patricia Morten and Glenn Gustavson

Periodontology Associates P.C.
Nancy and Gene Raymond
Blair Justin Reich and Elsa Olivetti
Dianne and Sarah Reich
Jesse and Alene Reich
Ms. Susan M. Revis
Ms. Dorothy A. Schecter
Ms. Diana K. Shoemaker
Ms. Betsy Tomlinson
Robert and Moyra Traupe
Wheat Landscape Gardening &
Design, Inc.
Mr. James S. Wilbur
Mr. Eric Wilshusen
Ms. Alice Tobin Zaff

THE BART AND MEL CHAPIN FUND

Mrs. E. Barton Chapin Jr.
Bart Chapin III and Lucy W. Hull

BOOTH DOLAN FUND

Mr. and Mrs. William T. Dolan

ELLIS FUNDS

Tim and Margaret Ellis
Bob and Bee Elmore
Mr. and Mrs. Warren M. Little
Ms. Elizabeth Malone
Neil and Suzanne McGinn

FUND FOR TEACHING AND THE ENVIRONMENT Mr. Paul Crowell

In Honor of Ginny Freeman and Fred Cichocki's Wedding Bart Chapin III and Lucy W. Hull Ms. L. Citizen

CAROLYN GEBBIA FUND

Ms. Mary Ann Balco-Berry
Mr. and Mrs. Alexander J. Berardi Jr.
Mr. William Brislin III
Ms. Marjorie A. Buckley
Mr and Mrs. John F. Cole
Mr. and Mrs. Robert Cole
Mr. and Mrs. Thomas Dowd
Charles and Kathleen Gebbia

GIRLS PROGRAM ENDOWMENT FUND

Mr. Patrick Mehr
Mike and Margie Shannon
Bart Chapin III and Lucy W. Hull

BILL AND MARDI HUDSON FUND Don Hudson and Phine Ewing



MAINE COAST SEMESTER SCHOLARSHIP FUND

Anonymous (14)
Ms. Tessa van der Werff Abbott
Mr. William B. Abbott
Ms. Robin Ackerman
Carol and Mark Aloe
Ms. Halle E. Anders
S. Scott Andrews and M. Susan West
Joan Baldwin, Geoffrey Rossano,
Margaret Rossano, and Chloe
Rossano
Ms. Sheryl A. Blair
Bill and Katherine Brown
Mario Cardenas and Laurie
Lingham
Gerald and Barbara Clow
Denis and C. S. Corish
Ms. Lulu Davis
John and Patsy Dent
Robert J. Deutsch and Melody
Maurer
Laura and Paul Dillon
Ms. Lauren Downey
The Dryman Family
Ms. Mia R. Farber
Ms. Heidi Fessenden
Google
Tom and Maryellen Grady
Jenn and Jay Gudebski
Ms. Hollis O. Haywood
Lane Heard, Margaret Bauer, and
Clarion Heard
Benjamin and Heather Heuston
Steve and Debby Jencks
Ms. Cynthia Weed Johnson
Mr. Coleman Kennedy
Marsha Lenz and Peter Jones
Michael and Sissy Leonard
Lewin-Krulwich Family
The Lundy Family
Stephen L. Malcom and Martha
Barrett
The Page & Otto Marx, Jr.
Foundation
Dr. and Mrs. Henry Masur
Mr. and Mrs. Douglas Maxwell
Mr. and Mrs. Robert M. McAlaine
Mr. Daegan Miller
Richard H. Millington and Nalini
Bhushan
Norman and Sara Nelson
Ms. Deborah J. Newmyer
Ms. Julie A. Nisbet
Ms. Kathryn A. Oberly
Beth and Bob Ollwerther
Ms. Shea O'Sullivan
Kathy and Steve Parker
Stewart, Elliott, and Day Peery

Robert Pindyck and Nurit Eini-
Pindyck
Ms. Chloe Rossano
Mr. and Mrs. Lewis Rumford III
Mr. Andrew D. Schapiro
Mr. and Mrs. Henry A. Sirois
Mei Su Teng and Clarion Heard
Edie Aloe Traina and Mark Traina
Peter, Lynne, and Hope Troup
Mr. Adam Wienert

In Honor of Scott Andrews
Ms. Tessa van der Werff Abbott
Mrs. Mary Hollis Clark

In Honor of Chelsea Pompadur
Mr. I. Martin Pompadur

MARVIL/EVANS FUND
William and Lucretia Evans
Joshua D. and Rebecca E. Marvil
Rebecca Marvil and Brian Smyth

MATT RODMAN FUND
Mr. Paul H. Arthur
Mr. Neil C. Bloch
Ms. Jeanne A. Burns
Mr. and Mrs. David M. Elliott
Don Hudson and Phine Ewing
Joan and Remy Mansfield
Mr. and Mrs. Edward L. Reed
Lydia Rodman and Listo Fisher
Dr. Mariellen T. Rodman
Oliver and Cynthia Rodman
Mr. Stephen B. Rodman
Craig Smith and Claire Dahill
Dick Thomas and Karen Dille
Mr. and Mrs. Robert B. Thomas
Ms. Joanne Van Voorhis
Kate C. Wilkinson and Peter W.
Stoops

THE PHIL SCHEPPS FUND
Barbara Cottrell and Lee Schepps

SPIESS FUND
Betsy, Gary, Will, Ben, Jamie, and
John Spiess

ROB STONE MEMORIAL FUND
Sue and Dave Clark
Mr. Andrew F. Gustafson
Karen Jennings and Ted Weber
Bob and Cindy Stone
Neal Sondheimer and Alyssa Pei

THE TYLER FUND
Mr. and Mrs. William B. Tyler

SCOTT ANDREWS FUND
Mrs. Carl W. Andrews
Margaret Andrews and George
Swope
Ms. Lucy Baumrind
Ms. Regan Brashear
Steve and Judy Brown
Mr. John H. Burbank Jr.
Mr. Richard Coursen
William J. Dana and Emily L.
Boochever
Pat and Margaret Hare
Mr. Tucker Harrison
Mr. Charlie Hudson
Mark Isaacson and Karen Herold
Karen A. and Kevin W. Kennedy
Foundation
Kevin and Karen Kennedy
Brigitte and Hal Kingsbury
David Lemonick and Mary Tuttle
Mr. Bill Mayher
Robert and Mimi McCallum
Pam, Mike, and James Monaco
Beth and Steve Morris
Ms. Shea O'Sullivan
Betsy and Lee Robinson
Ms. Rebecca J. Silverstein
Adele and George Wailand
Amy Young and Carl Farrington

THE CHEWONKI CIRCLE
The Chewonki Circle honors those
who give \$1,000 or more annually
to Chewonki.

Ms. Tessa van der Werff Abbott
Jackie and Julius Alexander
John and Judith Alexander
Jim and Kim Ambach
Nathalie and James Andrews
Mr. James Balog
Mr. Edward P. Barker
Mr. and Mrs. David I. Barton
Mickey and Mary Ann Baumrind
Chris and Charlotte Beebe
Scott and Laura Beebe
Samuel Belk and Sherry Thornburg
Ms. Macky Bennett
Mr. Sean Bohac
Mr. and Mrs. William N. Booth
Neal and Winnie Borden
Mr. Norman G. Brown
Ms. Mathilde K. Burnett
Ann and Richard Burnham
Samuel and Carolin Buttrick
Mr. Adan Celis Gonzalez and Ms.
Gloria Madrid
Bart Chapin III and Lucy W. Hull

Mrs. E. Barton Chapin Jr.
Mr. Dick Chase
Mr. Josh Chou
Mr. Kevin P. Connors
Barbara Cottrell and Lee Schepps
Helen and David Crowell
Mr. Paul Crowell
William J. Dana and Emily L.
Boochever
Mr. Paul L. M. Davis
Ms. Lile H. Deinard
Robert J. Deutsch and Melody
Maurer
Mr. and Mrs. William T. Dolan
Mrs. James C. Dudley
Mark Eaton and Brooksie Koopman
The Eberle Family
Mr. and Mrs. Jeffrey L. Eberle
Jon Edwards and Nancy Fox
Susan and Linc Eldredge
Mr. and Mrs. David M. Elliott
Tim and Margaret Ellis
Bob and Bee Elmore
Dr. Francisco J. de Echegaray Espada
Mark Evans and Barbara Mensch
William and Lucretia Evans
Richard Frantz and Jennifer Fox
Ellen and Larry Garber
Ms. Elizabeth B. Gilmore
Jeffrey and Vivian Gordon
Jenn, Jay, and Taylor Gudebski
Cyrus and Patricia Hagge
Mr. and Mrs. Gordon Hall III
Ms. Lynn Harrison
Ms. Susan H. Haskell
Roy Henwood and Nancy Kuhn
Bill Hetzel and Jennifer Niese
Mr. William B. Hetzel Jr.
Mr. and Mrs. Nicholas P. Heymann
Ken and Hilary Holm
Mr. Charles H. Hood
Ms. Alix W. Hopkins
Mr. Samuel G. Huber
Mrs. Sherry F. Huber
Ms. Cynthia Weed Johnson
Ms. Wendy E. Jordan
Dr. Julia G. Kahrl
Mr. Frederick Kauders
Eugene Keilin and Joanne Witty
Mr. Coleman Kennedy
Kevin and Karen Kennedy
Derek and Lisa Kirkland
Chris and Sue Klem
Richard T. Krantz and Kathryn M.
Deane
Mr. Shepard Krech III
Dr. Carl A. Kuehn and Dr. Wendy C.
Gamble
Dan and Esu Lackey

Is your name missing? Gifts listed in this report were made between September 1, 2006, and August 31, 2007. If we have made a mistake, please let us know. Gifts to the Annual Appeal made after August 31, 2007, will be listed in the next Annual Report.

Mr. John C. Lackey
Mr. Eugene M. Lang
Ms. Elizabeth L. Lathrop
Gus Lawlor and Suzanne Coates
Peter and Linda Leahy
Mrs. Anna S. Leeson
Mrs. Joan W. Leslie
Mr. and Mrs. Richard Levengood
Mr. and Mrs. James G. Lister
Henry and Lisa Lovejoy
Donald Margulies and Lynn A. Street
Joshua D. and Rebecca E. Marvil
Rebecca Marvil and Brian Smyth
Ms. Tina A. Mattingly
The McClean Family
Joyce and Hugh McCormick
Neil and Suzanne McGinn
Kate and Jordan McGowan
Marie and Robert McInnes
Holly and Tom Meeks
Beth and Jeffrey Mendel
David Morrison and Mary Fleming
Sarah Myers and Frank Myers
Peter and Kristin Nordblom
Chelsie and Sandy Olney
Mr. Robert Olney
Alyssa Pei and Neal Sondheimer
Robert Pindyck and Nurit Eini-Pindyck
Mr. I. Martin Pompadur
Betsy and Lee Robinson
Oliver and Cynthia Rodman
Ms. Paige Ruane
William and Jennifer Ruhl
Mr. Lee Rust
The Schwarz and Jelin Family
Joseph and Caitlin Selle
Bill and Fay Shutzer
Ms. Mary Minor C. Smith
Betsy and Gary Spiess
Jonathan H. Sproggell and M. K. Taylor
Mr. Matt Stewart

Ellie and John Svenson
Mr. David W. Swetland
Mr. and Mrs. William B. Tyler
Mr. and Mrs. John C. Warren
Jim and Julie Wellington
David and Martha West
Ted and Betsy Wheeler
Ms. Jean T. Wilkinson
Kate C. Wilkinson and Peter W. Stoops
Nathan and Barbara F. Willensky
Mrs. Jean W. Wilson

THE OSPREY SOCIETY

The Osprey Society honors those who have included Chewonki in their estate planning. Please let us know if your name should be on the following list.

Anonymous (3)
Mr. John L. Allen
Mrs. John L. Allen
Garth and Heather Altenburg
Dr. David S. Barrington and Dr. Cathy Paris
Mr. David K. Bell
Ann and Chester Billings Jr.
Susan and Harold Burnett
Elizabeth I. Byrne, Ed.D.
Mrs. E. Barton Chapin Jr.
Mrs. Melville Chapin
Mr. Chester W. Cooke
Dr. Peter Blaze Corcoran
Mr. and Mrs. Norman C. Cross Jr.
Dr. Raymond Culver
Ms. Suzanne R. Culver
Mr. Paul Davis
Ms. Eleanor I. Druckman
Tim and Margaret Ellis
Bee and Bob Elmore
Rev. and Mrs. John D. Eusden

William and Lucretia Evans
Richard Frantz and Jennifer Fox
Dr. Wendy C. Gamble and Dr. Carl A. Kuehn
Susan and John Gillespie
Mr. and Mrs. Charles B. Gordy II
Mr. and Mrs. Kenneth Grant
Jenn and Jay Gudebski
Mr. and Mrs. Paul G. Hagan
Mr. Gordon Hall III
Mr. William B. Hetzel Jr.
Hilary and Ken Holm
Don Hudson and Phine Ewing
Mr. and Mrs. Robert H. Johnson
Chris and Lee Kauders
Mr. Frederick Kauders
Esu and Dan Lackey
Mr. and Mrs. David R. Lamb
Mr. and Mrs. Warren M. Little
Joshua D. and Rebecca E. Marvil
Rebecca Marvil and Brian Smyth
Ms. Margaret Mathis
John and Mary Jane McGlennon

Angus and Barbara McIntyre
Ted and Martha Pasternack
Mr. John I. Quimby
Ms. Nancy W. Rathborne
Gene and Nancy Raymond
Mr. Alan Y. Roberts
Mrs. James A. Ross, Jr.
Mr. David Schurman
Mr. and Mrs. Frederick H. Scott
Mr. and Mrs. David W. Sculley
Mr. and Mrs. Scott W. Seelbach
Joseph and Caitlin Selle
George and Susan Sergeant
Mr. and Mrs. Henry L. Smith
Mrs. Martha Stearns
Dick Thomas and Karen Dille
Mr. and Mrs. James S. Thornton
Mr. and Mrs. William N. Thurman
Mr. and Mrs. William B. Tyler
Mrs. Arleon S. Waldron
Ed and Claire Weiser
Ms. Amy Young

THANK YOU FOR YOUR SUPPORT

Chewonki is proud to be a member of MaineShare, working with 36 other non-profit organizations to build a bright future for the people of Maine and our natural environment. MaineShare has raised and distributed 2.4 million dollars for social change in Maine since 1990. Through payroll contributions and direct gifts, MaineShare donors help to achieve good health, safe communities, economic opportunity, human rights, and a healthy environment. We are very grateful to each of the many donors who have supported Chewonki through MaineShare. If you are interested in joining the more than 150 workplaces that already participate in a MaineShare workplace giving program or if you would like to learn more about MaineShare, please check their website at www.maineshare.org or contact Chewonki's Development Office.



BALANCE SHEET

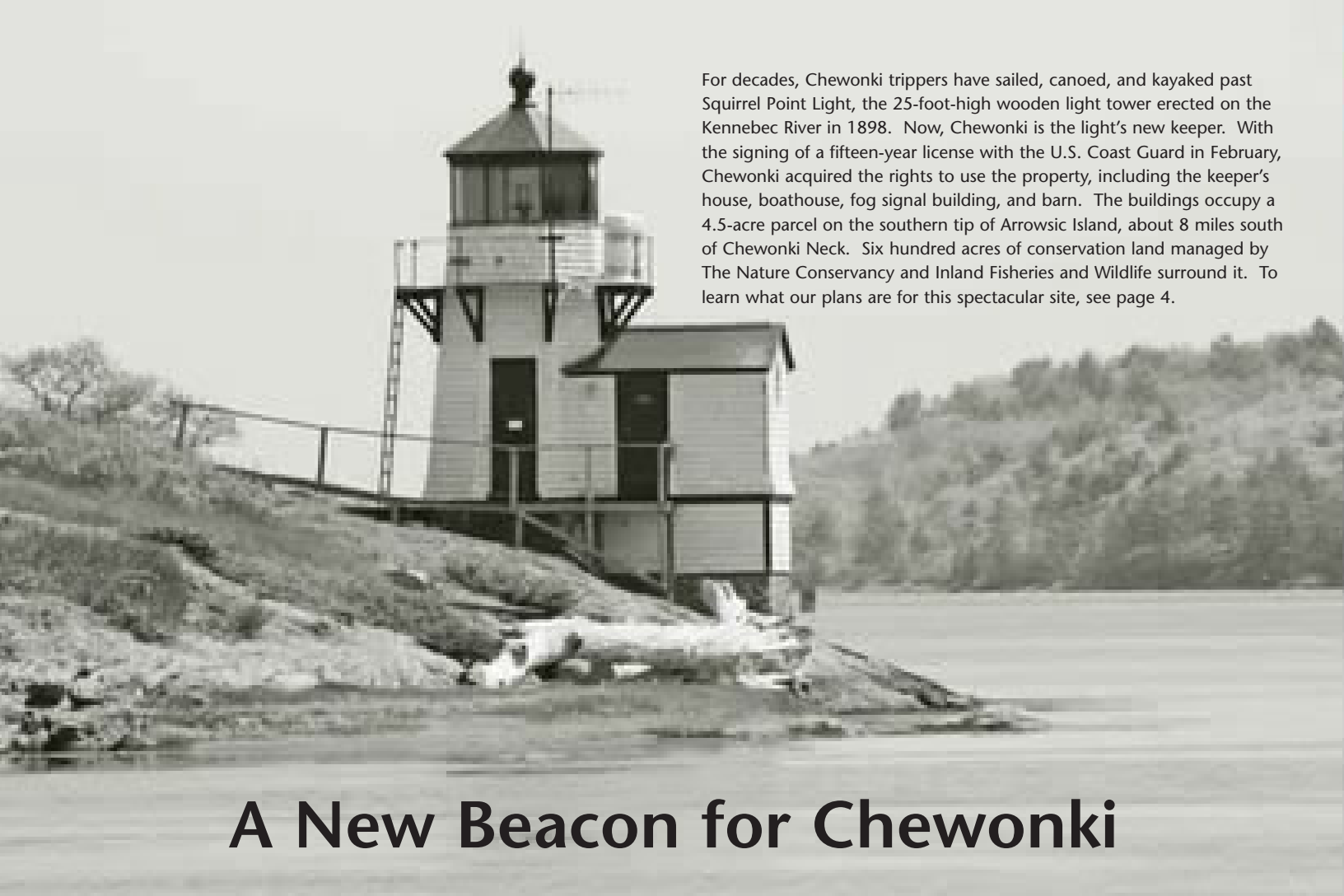
	Unrestricted	Temporarily Restricted	Permanently Restricted	Total FY 2007
ASSETS				
Current Assets	1,852,970	2,430,969	2,739,838	7,023,777
Property and Equipment	9,185,087		71,910	9,256,997
Other Assets	375,000		309,964	684,964
Total Assets	11,413,057	2,430,969	3,121,712	16,965,738

LIABILITIES AND FUND BALANCE

Current Liabilities	1,364,369	288,072	(197,128)	1,455,313
Long-term Debt	556,580			556,580
Fund Balance	9,492,108	2,142,897	3,318,840	14,953,845
Total Liabilities	11,413,057	2,430,969	3,121,712	16,965,738

STATEMENT OF REVENUE AND EXPENSES

Tuition	3,517,245
Less Scholarship	(429,979)
Net Tuition	3,087,266
Investment Income	119,713
Unrestricted Contributions	373,280
Temporarily Restricted Contributions	2,425,210
Restricted Contributions	700,756
Designated Program Contributions	51,284
Unrealized Gain (loss) on Investments	85,905
Store Income	10,996
Other Income	118,553
Total	6,972,963
EXPENSES	
Program:	
Summer Camps & Trips	1,066,336
Center for Environmental Education	443,394
Maine Coast Semester	743,528
Foundation	1,457,612
Capital Expenses	451,966
Total	4,162,836
Increase in Net Assets	2,810,127



For decades, Chewonki trippers have sailed, canoed, and kayaked past Squirrel Point Light, the 25-foot-high wooden light tower erected on the Kennebec River in 1898. Now, Chewonki is the light's new keeper. With the signing of a fifteen-year license with the U.S. Coast Guard in February, Chewonki acquired the rights to use the property, including the keeper's house, boathouse, fog signal building, and barn. The buildings occupy a 4.5-acre parcel on the southern tip of Arrowsic Island, about 8 miles south of Chewonki Neck. Six hundred acres of conservation land managed by The Nature Conservancy and Inland Fisheries and Wildlife surround it. To learn what our plans are for this spectacular site, see page 4.

A New Beacon for Chewonki

Photo by Jeremy D'Entremont, www.lighthouse.cc

Please recycle the *Chronicle* by passing it along to friends or public officials or donating it to a doctor's office, school, retirement home, or library.



485 Chewonki Neck Road, Wiscasset, Maine 04578-4822

Nonprofit Org.
U.S. Postage
PAID
Lewiston, ME
Permit No. 82



Printed on Recycled Paper